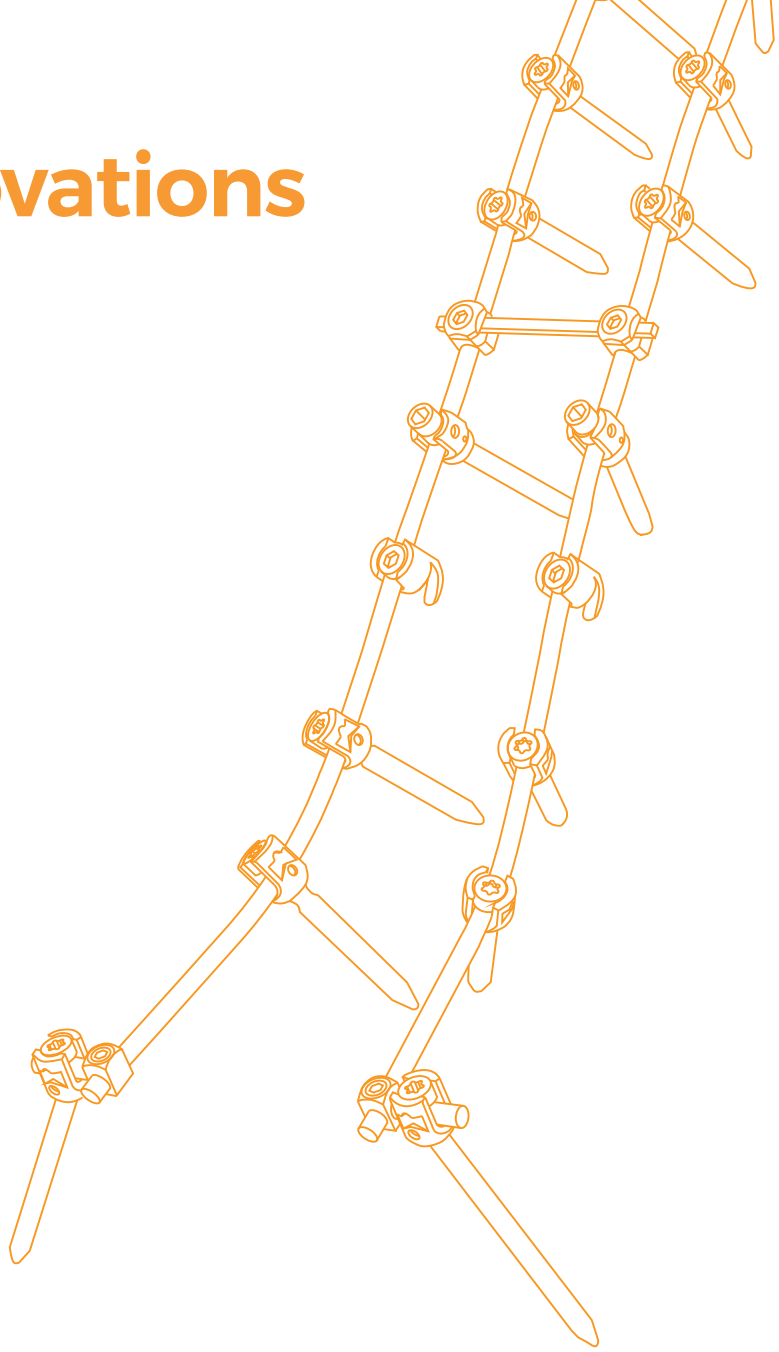


xl-spine innovations

Spine System



xlo
trusted by
Orthopaedics



XLO, established in 1992, has emerged as a pioneering force in the field of orthopaedic implants. The company is dedicated to enhancing patient outcomes and improving quality of life through innovative solutions in orthopaedics.

With a strong emphasis on quality and precision, **XLO a US FDA, CE, ISO13485:2016, WHO:GMP, ISO 9001:2015 & Indian FDA** has positioned itself as a leader in the design, development, and manufacturing of advanced orthopaedic implants.

XLO offers the most extensive range of Cementless & Cemented Joint Replacement Implants, Trauma Implants, 3d Printed Patient Specific Implants & Instruments along with Bone Cement with a state-of-the-art manufacturing facility located in New Delhi, India. This facility is equipped with advanced technology that supports the production of high-quality orthopaedic implants while adhering to strict regulatory standards.

The company has established a pan-India presence, ensuring that its products are accessible across the country. Furthermore, XLO exports its innovative solutions worldwide, contributing significantly to global healthcare advancements in orthopaedics.



xl-spine innovations

Pedicle Screw System

Features & Benefits

Optimized Visualization and Access

Implants have a low profile and reducers are designed with minimal bulk for improved visualization.

Locking Mechanism

Optimized buttress thread on the set screw minimizes the potential for head splay and cross threading.

Self-tapping screw tip

Aggressive cutting flute is designed to provide surgeons the option of eliminating the tapping step of the surgical procedure.

Monoaxial Pedicle Screw

| Ref. No | Dia(Ø) | Length |
|------------|--------|--------------|
| XL101.45.L | Ø4.5mm | 25mm To 45mm |
| XL102.55.L | Ø5.5mm | 30mm To 50mm |
| XL103.65.L | Ø6.5mm | 30mm To 50mm |



Polyaxial Pedicle Screw

| Ref. No | Dia(Ø) | Length |
|------------|--------|--------------|
| XL104.45.L | Ø4.5mm | 25mm To 45mm |
| XL105.55.L | Ø5.5mm | 30mm To 50mm |
| XL106.65.L | Ø6.5mm | 30mm To 90mm |
| XL134.70.L | Ø7.0mm | 30mm To 90mm |



Reduction Monoaxial Pedicle Screw

| Ref. No | Dia(Ø) | Length |
|------------|--------|--------------|
| XL107.55.L | Ø5.5mm | 30mm To 50mm |
| XL108.65.L | Ø6.5mm | 30mm To 50mm |

Reduction Polyaxial Pedicle Screw

| Ref. No | Dia(Ø) | Length |
|------------|--------|--------------|
| XL109.55.L | Ø5.5mm | 30mm To 50mm |
| XL110.65.L | Ø6.5mm | 30mm To 50mm |



xl-spine innovations

Pedicle Screw System



Features & Benefits

Dual Lead Thread form

Substantial grip in osteoporotic bones. Color-coded by bone screw diameter.

Optimized Visualization and Access

Implants have a low profile and reducers are designed with minimal bulk for improved visualization.

Locking Mechanism

Optimized buttress thread on the set screw minimizes the potential for head splay and cross threading.

Self-tapping screw tip

Aggressive cutting flute is designed to provide surgeons the option of eliminating the tapping step of the surgical procedure.

Monoaxial Pedicle Screw

| Ref. No | Dia(Ø) | Length |
|------------|--------|--------------|
| XL128.45.L | Ø4.5mm | 25mm To 45mm |
| XL129.55.L | Ø5.5mm | 30mm To 50mm |
| XL130.65.L | Ø6.5mm | 30mm To 50mm |



Polyaxial Pedicle Screw

| Ref. No | Dia(Ø) | Length |
|------------|--------|--------------|
| XL131.45.L | Ø4.5mm | 25mm To 45mm |
| XL132.55.L | Ø5.5mm | 30mm To 50mm |
| XL133.65.L | Ø6.5mm | 30mm To 90mm |



xl-spine innovations

Pedicle Screw System

Features & Benefits

H. A. Coating

Eliminates the problem of screw loosening irrespective of gender, age, number of level stabilised or whether there was previous lumbar surgery. Color-coded by bone screw diameter.

Optimized Visualization and Access

Implants have a low profile and reducers are designed with minimal bulk for improved visualization.

Locking Mechanism

Optimized buttress thread on the set screw minimizes the potential for head splay and cross threading.

Monoaxial Pedicle Screw

| Ref. No | Dia(Ø) | Length |
|------------|--------|--------------|
| XL426.45.L | Ø4.5mm | 25mm To 45mm |
| XL427.55.L | Ø5.5mm | 30mm To 50mm |
| XL428.65.L | Ø6.5mm | 30mm To 50mm |



Polyaxial Pedicle Screw

| Ref. No | Dia(Ø) | Length |
|------------|--------|--------------|
| XL429.45.L | Ø4.5mm | 25mm To 45mm |
| XL430.55.L | Ø5.5mm | 30mm To 50mm |
| XL431.65.L | Ø6.5mm | 30mm To 90mm |



Reduction Polyaxial Pedicle Screw

| Ref. No | Dia(Ø) | Length |
|------------|--------|--------------|
| XL436.55.L | Ø5.5mm | 30mm To 50mm |
| XL437.65.L | Ø6.5mm | 30mm To 50mm |



xl-spine innovations

Pedicle Screw System

Features & Benefits

It helps to inject the bone cement into the vertebral body and eliminates the problem of screw loosening irrespective of gender, age, number of level stabilised or whether there was previous lumbar surgery.
Color-coded by bone screw diameter.

Optimized Visualization and Access

Implants have a low profile and reducers are designed with minimal bulk for improved visualization.

Locking Mechanism

Optimized buttress thread on the set screw minimizes the potential for head splay and cross threading.

Polyaxial Pedicle Screw

| Ref. No | Dia(Ø) | Length |
|------------|--------|--------------|
| XL131.45.L | Ø4.5mm | 25mm To 45mm |
| XL132.55.L | Ø5.5mm | 30mm To 50mm |
| XL133.65.L | Ø6.5mm | 30mm To 90mm |



xl-spine innovations

MIS Spine Pedicle Screw

Features & Benefits

Rod Insertion System provides surgeons with next generation technology that will revolutionize the future of spine care.



MIS Spine Pedicle Screw

| Ref. No | Dia(Ø) | Length |
|------------|--------|--------------|
| XL432.55.L | Ø4.5mm | 25mm To 45mm |
| XL433.60.L | Ø5.5mm | 30mm To 50mm |
| XL434.65.L | Ø6.5mm | 30mm To 50mm |
| XL435.70.L | Ø7.0mm | 30mm To 50mm |

MIS Screw Rod, Curved

| Ref. No | Length |
|---------|---|
| XL442.L | 40mm to 100mm (5 mm Variation) 110mm & 120mm |

MIS Screw Rod, Straight

| Ref. No | Length |
|---------|---------------------------------|
| XL444.L | 40mm to 200mm (10 mm Variation) |



xl-spine innovations

MIS Spine Pedicle Screw



Features & Benefits

Tail tab stabilizes long arms during insertion & designed breakable before rod placement

80mm long arm applicable for all body types integrated fabrication ensures safe implantation

Gaps at long arm tail complied with the reduction clamp facilitates rod compression and spondylolisthesis reduction

Unique reversed thread technology & star recess minimize worn thread & shoving force at screw tail

Low profile, smaller screw tail basal area & duo thread enhance screw intensity, pullout strength and insertion speed

Monoaxial Pedicle Screw

| | |
|---------|---|
| Ref. No | XL138.D.L |
| Dia(Ø) | Ø4.5, Ø5.0, Ø5.5, Ø6.0, Ø6.5, Ø7.0 & Ø7.5 |
| Length | 25MM TO 55MM (5mm Increments) |

UNIAXIAL Pedicle Screw

| | |
|---------|-------------------------------------|
| Ref. No | XL139.D.L |
| Dia(Ø) | Ø5.0, Ø5.5, Ø6.0, Ø6.5, Ø7.0 & Ø7.5 |
| Length | 35MM TO 55MM (5mm Increments) |

POLYAXIAL Pedicle Screw

| | |
|---------|-------------------------------|
| Ref. No | XL140.D.L |
| Dia(Ø) | Ø5.5, Ø6.0, Ø6.5, Ø7.0 & Ø7.5 |
| Length | 35MM TO 55MM (5mm Increments) |



MIS Screw Rod, Curved

| Ref. No | Length |
|---------|--------------------------------|
| XL442.L | 40mm to 100mm (5 mm Variation) |
| | 110mm & 120mm |

MIS Screw Rod, Straight

| Ref. No | Length |
|---------|---------------------------------|
| XL444.L | 40mm to 200mm (10 mm Variation) |



xl-spine innovations

Spine Connecting System



XL-Occifix screw connector (Single Hole)

Ref. No XL214.01



XL-Occifix screw connector (Double Hole)

Ref. No XL214.02



XL-Occifix screw connector Open (Single Hole)

Ref. No XL215.01



XL-Occifix screw connector Open (Double Hole)

Ref. No XL215.02



3.5 mm Laminar Hook

Ref. No XL136.35

5.5 mm Laminar Hook

Ref. No XL136.55



xl-spine innovations

Spine Connecting System



Multispan Crosslink Connector

| Ref. No | Length |
|----------|----------|
| XL446.XS | 30-34 mm |
| XL446.S | 34-42 mm |
| XL446.M | 40-53 mm |
| XL446.L | 50-70 mm |



Connecting Rod 5.5 mm - One Side Hex

| Ref. No | Length |
|--------------|--------|
| XL111.55.50 | 50mm |
| XL111.55.60 | 60mm |
| XL111.55.70 | 70mm |
| XL111.55.80 | 80mm |
| XL111.55.90 | 90mm |
| XL111.55.100 | 100mm |
| XL111.55.110 | 110mm |
| XL111.55.120 | 120mm |
| XL111.55.130 | 130mm |
| XL111.55.140 | 140mm |
| XL111.55.150 | 150mm |
| XL111.55.200 | 200mm |
| XL111.55.250 | 250mm |
| XL111.55.300 | 300mm |



Transverse Connector - Square

| Ref. No | Length |
|---------|--------|
| XL122 | |

Transverse Connector Rod - Square

| Ref. No | Length |
|-----------|--------|
| XL123.50 | 50mm |
| XL123.60 | 60mm |
| XL123.70 | 70mm |
| XL123.80 | 80mm |
| XL123.90 | 90mm |
| XL123.100 | 100mm |
| XL123.110 | 110mm |
| XL123.120 | 120mm |



xl-spine innovations

Spine Connecting System



Posterior Cervical Connecting Rod, Ø3.5mm

Ref. No XL205.35.300

Length 300mm



Pre Bend Connecting Rod, Ø3.5mm

Ref. No XL210

Length 100mm X 200mm



Tapered Spine Rod Ø3.5mm X Ø5.5mm

Ref. No XL211.300

Length 100mm X 200mm



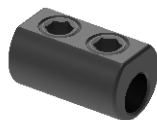
Inline connector 3.5mm to 5.5mm

Ref. No XL218



Domino connector 3.5mm to 5.5mm

Ref. No XL219



Triangle connector 3.5mm to 5.5mm

Ref. No XL220



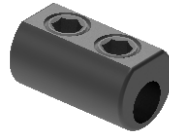
xl-spine innovations

Spine Connecting System



Inline Connector - 5.5 X 5.5mm

Ref. No XL145



Inline Connector - Long 5.5 X 5.5mm

Ref. No XL210



Spine Staple

Ref. No XL113



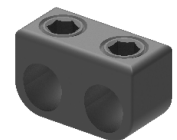
Domino Connector - Square 5.5 X 5.5mm

Ref. No XL218



Domino Connector - Rectangle 5.5 X 5.5mm

Ref. No XL144



Lateral Connector 5.5mm

Ref. No Length

XL147.20L 20mm

XL147.30L 30mm

XL147.40L 40mm



20 mm



30 mm



40 mm

xl-spine innovations

Posterior Cervical System

Ø3.5mm Posterior Cervical Screw (Short Thread)

| | |
|---------|------------------------------|
| Ref. No | XL222.35.L |
| Length | 26mm to 40mm (2mm Increment) |

Flower Design for Extra angle Movement



Ø3.5mm Posterior Cervical Screw (Full Thread)

| | |
|---------|------------------------------|
| Ref. No | XL223.35.L |
| Length | 10mm to 40mm (2mm Increment) |

Ø4.0mm Posterior Cervical Screw (Short Thread)

| | |
|---------|-------------------------------|
| Ref. No | XL224.40.L |
| Length | 26mm to 40mm (2 mm Increment) |

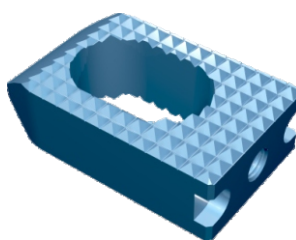
Ø4.0mm Posterior Cervical Screw (Full Thread)

| | |
|---------|------------------------------|
| Ref. No | XL225.40.L |
| Length | 10mm to 40mm (2mm Increment) |



Posterior Cervical C1-C2 Spacer

| Ref. No | Length |
|-----------|--------|
| XL451.T30 | 3.0mm |
| XL451.T35 | 3.5mm |
| XL451.T40 | 4.0mm |
| XL451.T45 | 4.5mm |
| XL451.T50 | 5.0mm |



xl-spine innovations

Posterior Cervical System

Features & Benefits

Small Profile of the screw head

Wide screw angle and low profile allows for easy adaptation of the construct to patient anatomy

Accept 3.5 mm Rod

Available in 3.5 mm and 4.0 mm Diameter

Partially Thread option available in 3.5 mm and 4.0 mm Diameter



Short Threaded Shaft



Set screw thread design ensures maximum strength and stabilization of the polyaxial construct



Posterior Cervical Connector

Ref. No XL206

Ø3.5mm Posterior Cervical Screw (Short Thread)

Ref. No XL201.35.L

Length 26mm to 40mm (2mm Increment)

Ø3.5mm Posterior Cervical Screw (Full Thread)

Ref. No XL202.35.L

Length 12mm to 30mm (2mm Increment)

Ø4.0mm Posterior Cervical Screw (Short Thread)

Ref. No XL203.40.L

Length 26mm to 40mm (2 mm Increment)

Ø4.0mm Posterior Cervical Screw (Full Thread)

Ref. No XL202.40.L

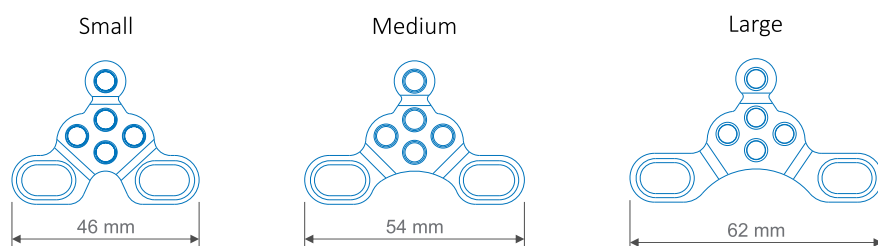
Length 26mm to 40mm (2 mm Increment)

xl-spine innovations

Adjustable Occipital Plate

Adjustable Occipital Plates Type II

XLO Offers three adjustable occipital plate sizes to accommodate the patient's anatomy. An occipital strap is available for fixation to the superior midline fixation hole. The XLO System offers $\varnothing 4.5$ mm occipital bone screws that have cortical threads. The XLO System has many occipital rod options including: pre-cut titanium, pre-contoured titanium. Rods transition to a $\varnothing 3.5$ mm diameter occipital portion to allow for a stronger construct.



Adjustable Occipital Plates Type II

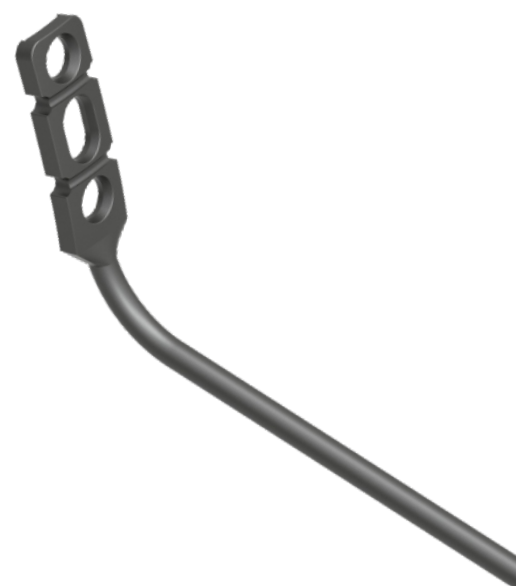
| Ref. No | Size |
|---------|--------|
| XL213.S | SMALL |
| XL213.M | MEDIUM |
| XL213.L | LARGE |

Plate Rod

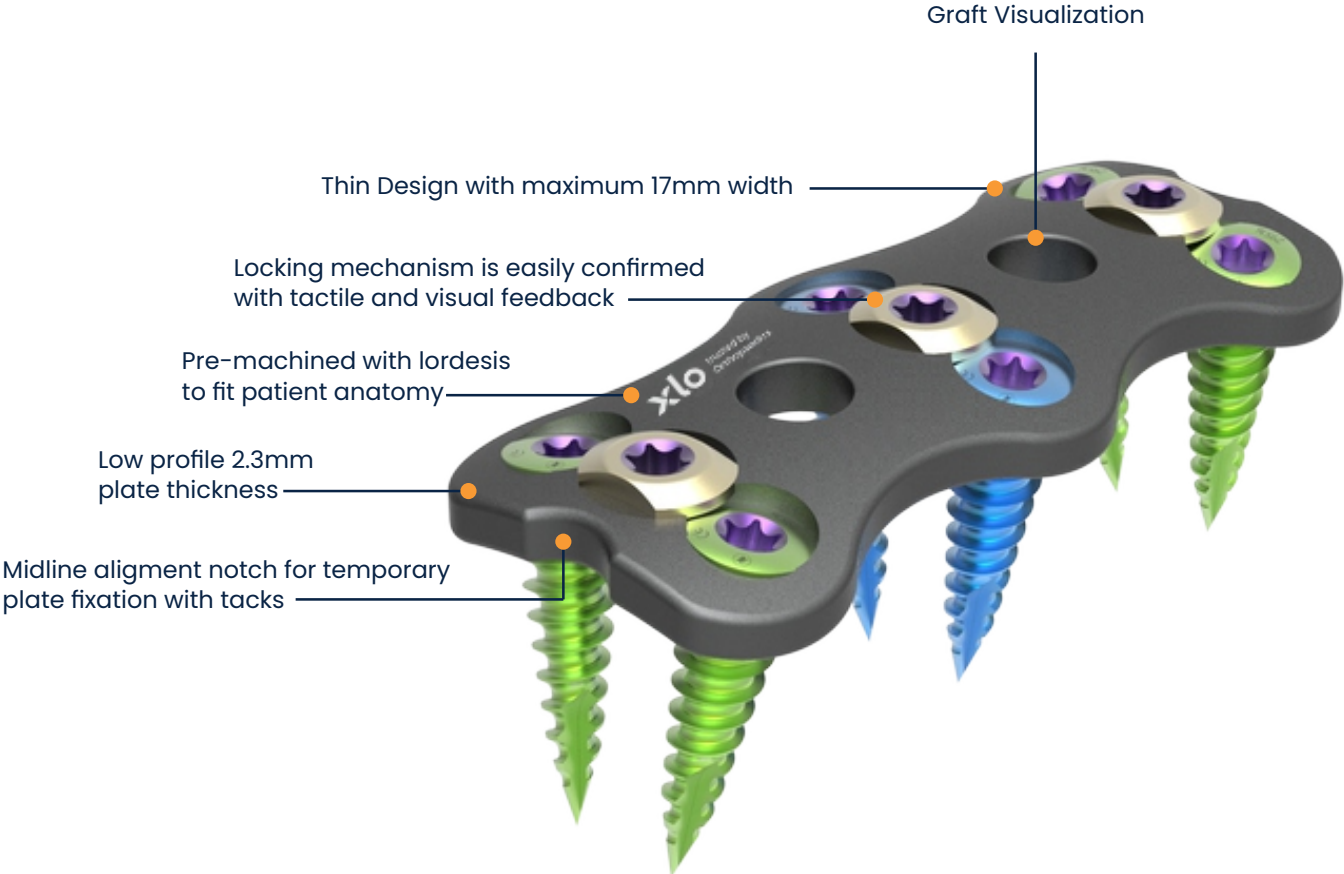
XLO offers two adjustable occipital plate sizes to accommodate the patient's anatomy. This Occifix plate is available two different sizes and it is combined with the $\varnothing 3.5$ mm diameter rod. The XLO System offers $\varnothing 4.5$ mm occipital bone screws that have cortical threads. The XLO System has many occipital rod options including: pre-cut titanium, pre-contoured titanium. Rods transition to a $\varnothing 3.5$ mm diameter occipital portion to allow for a stronger construct.

Plate Rod

| Ref. No | Size |
|-----------|-------|
| XL212.100 | 100mm |
| XL212.200 | 200mm |



xl-spine innovations 
Anterior Cervical Plate



ACP hole accept both fixed angle & Variable angle bone screw



Fixed Angle Screw



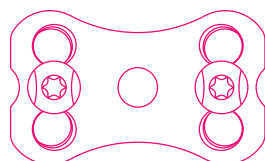
Variable angle Screw

xl-spine innovations

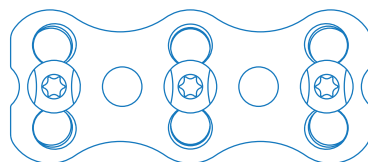
Anterior Cervical Plate

Anterior Cervical Spine Plate

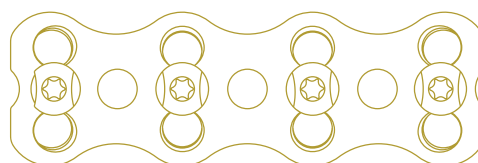
| Ref. No | Length | Hole |
|----------|--------|------|
| XL448.21 | 21mm | 4 |
| XL448.23 | 23mm | 4 |
| XL448.25 | 25mm | 4 |
| XL448.27 | 27mm | 4 |
| XL448.29 | 29mm | 4 |
| XL448.31 | 31mm | 4 |
| XL448.33 | 33mm | 4 |
| XL448.35 | 35mm | 4 |
| XL448.37 | 37mm | 4 |
| XL448.39 | 39mm | 6 |
| XL448.41 | 41mm | 6 |
| XL448.43 | 43mm | 6 |
| XL448.45 | 45mm | 6 |
| XL448.47 | 47mm | 6 |
| XL448.49 | 49mm | 6 |
| XL448.55 | 55mm | 6 |
| XL448.54 | 54mm | 8 |
| XL448.66 | 57mm | 8 |
| XL448.57 | 60mm | 8 |
| XL448.69 | 63mm | 8 |
| XL448.60 | 66mm | 8 |
| XL448.72 | 69mm | 8 |
| XL448.63 | 72mm | 8 |
| XL448.75 | 75mm | 8 |



4 Holes



6 Holes



8 Holes

4.0 Fixed angle Cervical Screw

| Ref. No | Length |
|-------------|--------|
| XL449.40.11 | 11mm |
| XL449.40.13 | 13mm |
| XL449.40.15 | 15mm |
| XL449.40.17 | 17mm |
| XL449.40.19 | 19mm |



4.5 Fixed angle Cervical Screw

| Ref. No | Length |
|-------------|--------|
| XL449.45.11 | 11mm |
| XL449.45.13 | 13mm |
| XL449.45.15 | 15mm |
| XL449.45.17 | 17mm |
| XL449.45.19 | 19mm |



4.0 Variable angle Cervical Screw

| Ref. No | Length |
|-------------|--------|
| XL450.40.11 | 11mm |
| XL450.40.13 | 13mm |
| XL450.40.15 | 15mm |
| XL450.40.17 | 17mm |
| XL450.40.19 | 19mm |



4.5 Variable angle Cervical Screw

| Ref. No | Length |
|-------------|--------|
| XL450.45.11 | 11mm |
| XL450.45.13 | 13mm |
| XL450.45.15 | 15mm |
| XL450.45.17 | 17mm |
| XL450.45.19 | 19mm |



xl-spine innovations

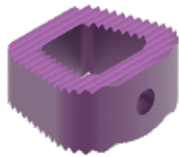
Anterior Cervical Cages



Large grafting area to optimize bone fusion.



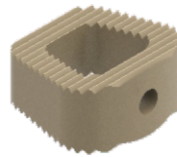
X-ray markers allows 3D-Visualization & radiological Identificaton.



Titanium

Ref. No XL407.H

Height 5, 6, 7, 8, 9, 10 & 11mm



Peek

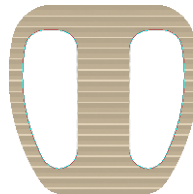
Ref. No XL415.H

Height 5, 6, 7, 8, 9, 10 & 11mm

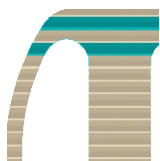
D-Anterior Cervical Spine Plate



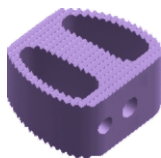
X-ray markers allows 3D-Visualization & radiological Identificaton.



Large grafting area to optimize bone fusion.



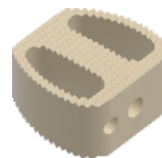
Implant teeth reduces likelihood of migration in any direction.



Titanium

Ref. No XL408.H

Height 5, 6, 7, 8, 9, 10 & 11mm



Peek

Ref. No XL416.H

Height 5, 6, 7, 8, 9, 10 & 11mm

xl-spine innovations

Anterior Cervical Cages

Features & Benefits

Natural Anatomical Profile

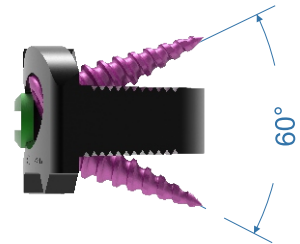
Integrated plate and spacer is designed to preserve the natural anatomical profile of the spine.

Less Disruptive

The system streamlines the entire ACDF procedure and facilitates a less invasive approach through a small incision with less retraction.

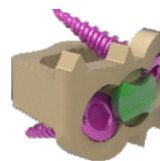
Biomechanical Strength and Stability

Biomechanically comparable to a traditional 2-level ACDF



Titanium

| | |
|---------|------------------|
| Ref. No | XL419.H |
| Height | 5, 6, 7, 8 & 9mm |

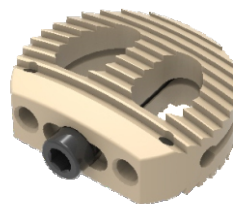


Peek

| | |
|---------|------------------|
| Ref. No | XL424.H |
| Height | 5, 6, 7, 8 & 9mm |

Cervical Interbody Cage, Expandable - PEEK

| | |
|---------|-------------------------|
| Ref. No | XL501.PH.LW |
| Height | 4, 5, 6, 7, 8, 9 & 10mm |
| Length | 14 & 16mm |
| Width | 12 & 14mm |



xl-spine innovations

Anterior Cervical Cages

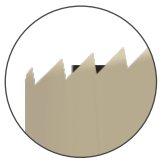
Indication

Degenerative disc disease (DDD, defined as neck pain of discogenic origin degeneration of the disc confirmed by history and radiographic studies)

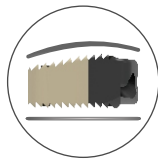
Spinal stenosis

Failed previous fusions

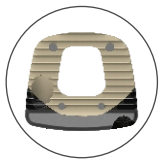
Pseudoarthrosis



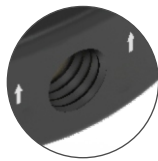
Aggressive tooth



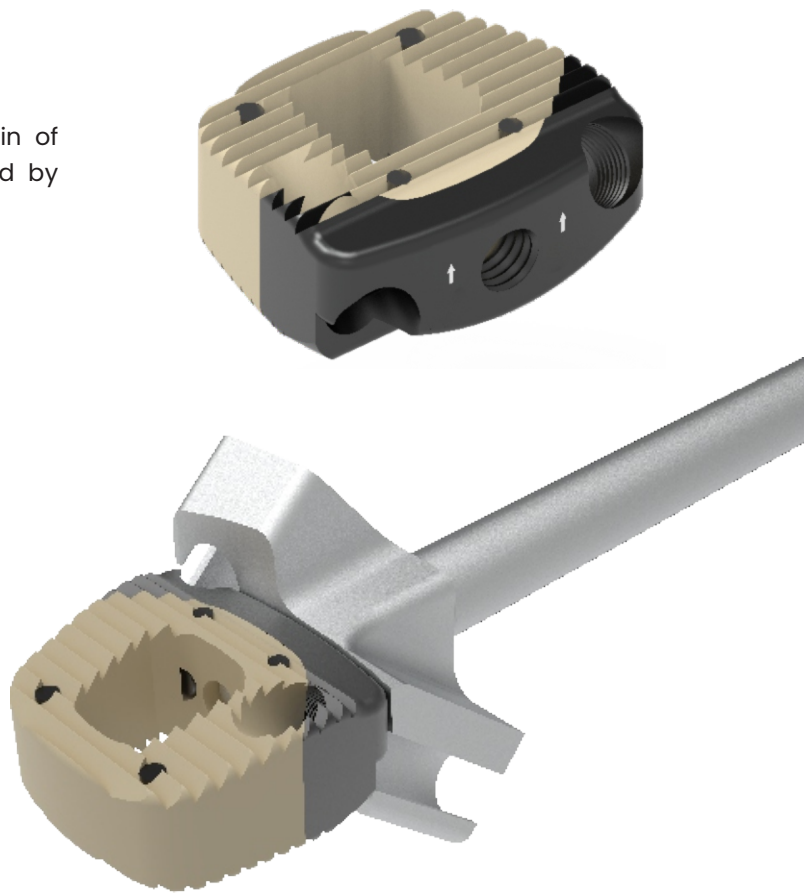
Anatomical Shape



Large BoneDraft Window



Threaded inserter allows for quick capture and stable insertion.



Titanium

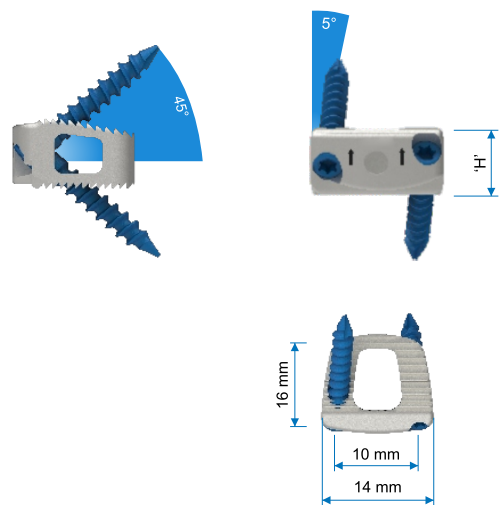
| | |
|---------|----------------------|
| Ref. No | XL421.H |
| Height | 5, 6, 7, 8, 9 & 10mm |

Peek

| | |
|---------|----------------------|
| Ref. No | XL425.H |
| Height | 5, 6, 7, 8, 9 & 10mm |

PEEK with Bone Graft

| | |
|---------|----------------------|
| Ref. No | XL461.H |
| Height | 5, 6, 7, 8, 9 & 10mm |



xl-spine innovations

P Cervical Cages



Features & Benefits

High mechanical strength and stability for demanding cervical surgical procedures

Simple surgical technique from preformed plates and fixed-angle screws

Self-locking screw

Accommodates autogenous bone graft to allow fusion to occur through the implant.

Self-drilling screw design offers quicker bone screw purchase.

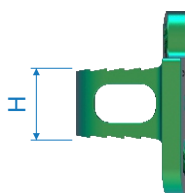
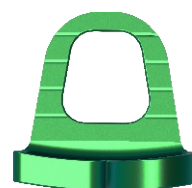
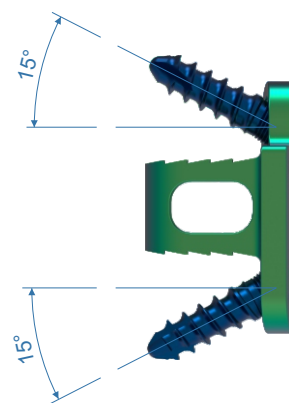


P Cervical Cage with Plate

Titanium

Ref. No XL420.H

Height 5, 6, 7, 8, 9 & 10mm



xl-spine innovations

Expandable Jack Cage



Features & Benefits

Anterior vertebral column stabilized to become load bearing

Vertebral bodies can be substituted

Cylindrical Hollow design offers to be filled implants with bone substitute.

The Implant is harbour easily & safely between the adjacent end plate of the vertebral bodies.

Expandable Jack Cage with Plate

| | |
|---------|--------------------------------|
| Ref. No | XL423.TD.S |
| Dia Ø | Ø 12, Ø 14 & Ø 16 |
| Size | 20 X 25, 25 X 32.5 & 30 X 42.5 |



Expandable Plus Jack Cage with Plate

| | |
|---------|-------------------|
| Ref. No | XL456.TD.S |
| Dia Ø | Ø 12, Ø 14 & Ø 16 |
| Size | 20, 25 & 30 |



xl-spine innovations

Cervical Disc - Prosthesis



Expandable Jack Cage with Plate

| | |
|---------|---------------|
| Ref. No | XL455.H.LW |
| Height | 5, 6, 7 & 8mm |
| Length | 14 & 16mm |
| Width | 12 & 14mm |



Anterior Cervical Lag Screw - S/D, Cannulated

| | |
|---------|------------------------------|
| Ref. No | XL152.L |
| Height | 28mm to 50mm (2mm Increment) |



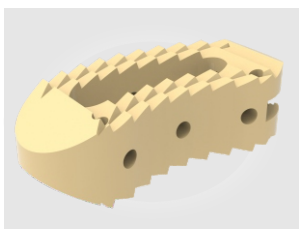
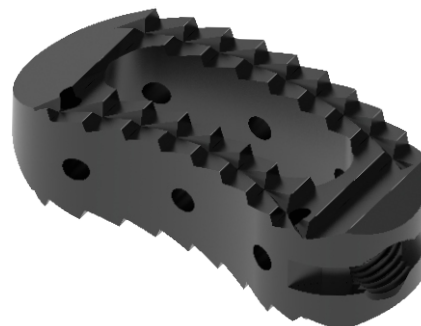
xl-spine innovations

Banana Cage

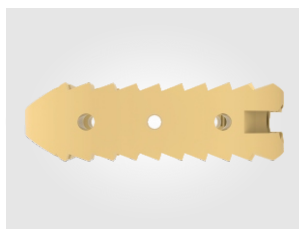


Indication

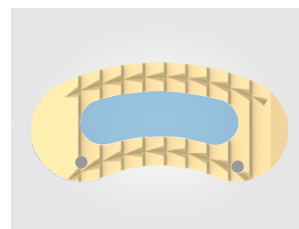
- Advanced Discopathies
- Extensive Decompression
- Spodylolisthesis
- Failed disc surgery
- Re-current disc herniation
- Post-operative instability
- Lumber pseudarthrosis



Tapered tip facilitates easy insertion.



Anatomical shape and aggressive tooth pattern maximizes end plate contact and stability.



Large graft area allows substantial bone growth.

Titanium

| | |
|---------|----------------------------------|
| Ref. No | XL412.PH.L |
| Height | 5, 6, 7, 8, 9, 10, 11, 12 & 13mm |
| Length | 25 & 30mm |

Peek

| | |
|---------|----------------------------------|
| Ref. No | XL417.PH.L |
| Height | 5, 6, 7, 8, 9, 10, 11, 12 & 13mm |
| Length | 25 & 30mm |

Features & Benefits

- Imported Medical Vesta material

Closed to human skeleton in modulus of elasticity share the stress with cancellous bone and facilitates fusion X-ray permeable and make fusion observation convenient after surgery

- Preset X-ray Marker

Facilitate confirming implant location during and after surgery

- Bullet shaped foreside

Easier insertion specially anteriorly

- Convex design

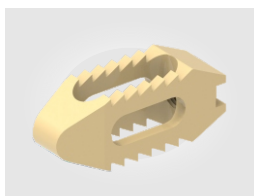
Fit closer to vertebral

Self-distracting intervertebral space at insertion

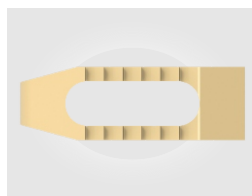
Facilitates maintenance and restoration of lumbar physiological curvature and prevent lumbago after surgery

- Serrated teeth surface

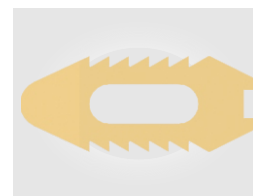
Provide ideal initial stability and no easy to come offween the adjacent end plate of the vertebral bodies.



Bullet shaped foreside



Preset X-ray Marker



Serrated teeth surface

Titanium

| | |
|---------|---------------------------|
| Ref. No | XL414.H.L |
| Height | 7, 8, 9, 10, 11, 12, 13mm |
| Length | 20 & 25mm |

Peek

| | |
|---------|---------------------------|
| Ref. No | XL418.PH.L |
| Height | 7, 8, 9, 10, 11, 12, 13mm |
| Length | 20 & 25mm |

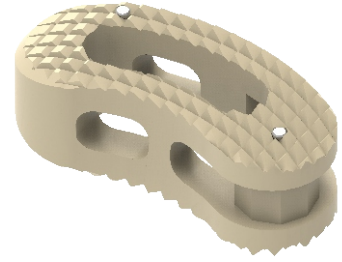
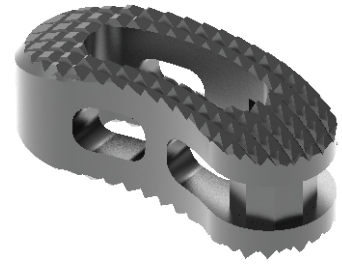
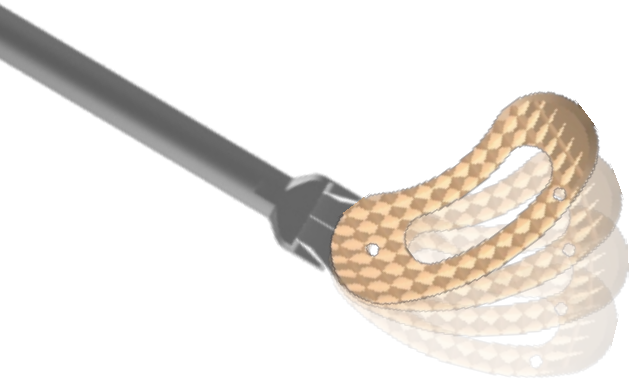
xl-spine innovations

TLIF Cage

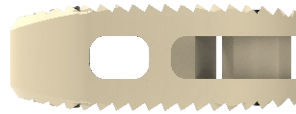


Features & Benefits

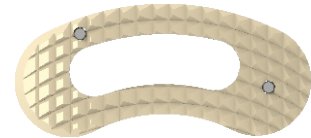
Large segmental bone graft area for better fusion, promote better graft integration and maximize contact area between vertebral end plate and bone graft.



Tapered tip facilitates easy insertion.



Anatomical shape and aggressive tooth pattern maximizes end plate contact and stability.



Large graft area allows substantial bone growth.

Titanium

| | |
|---------|---------------------------|
| Ref. No | XL439.PH.LW |
| Height | 7, 8, 9, 10, 11, 12, 13mm |
| Length | 27 & 30mm |
| Width | 10 & 12mm |

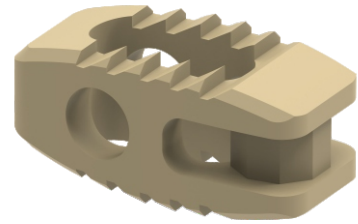
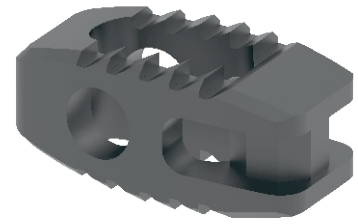
Peek

| | |
|---------|---------------------------|
| Ref. No | XL441.PH.LW |
| Height | 7, 8, 9, 10, 11, 12, 13mm |
| Length | 27 & 30mm |
| Width | 10 & 12mm |

xl-spine innovations PLIF Cage

Features & Benefits

Large segmental bone graft area for better fusion, promote better graft integration and maximize contact area between vertebral end plate and bone graft.



Bullet shaped foreside



Serrated teeth surface



Preset X-ray Marker

Titanium

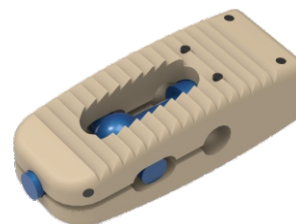
| | |
|---------|---------------------------|
| Ref. No | XL440.TH.L |
| Height | 7, 8, 9, 10, 11, 12, 13mm |
| Length | 22, 26 & 32mm |

Peek

| | |
|---------|---------------------------|
| Ref. No | XL438.PH.L |
| Height | 7, 8, 9, 10, 11, 12, 13mm |
| Length | 22, 26 & 32mm |

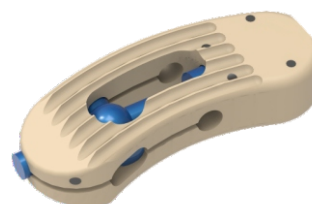
PLIF Expandable PEEK Cage

| | |
|---------|-----------|
| Ref. No | XL503.PH |
| Height | 6 to 16mm |



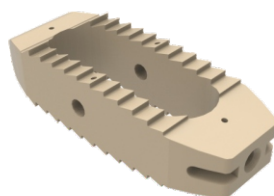
TLIF Expandable PEEK Cage

| | |
|---------|-----------|
| Ref. No | XL502.PH |
| Height | 6 to 16mm |



OLIF Cage 0°

| | |
|---------|------------|
| Ref. No | XL457.45.H |
| Height | 9 to 16mm |



OLIF Cage 6°

| | |
|---------|------------|
| Ref. No | XL458.45.H |
| Height | 9 to 16mm |

OLIF Plate

| | | |
|---------|---------|-------|
| Ref. No | XL459.S | Small |
| | XL459.L | Large |

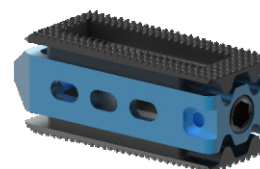


OLIF S/T Screw

| | |
|---------|---------------------|
| Ref. No | XL460.L |
| Length | 20 to 50 (5mm INC.) |

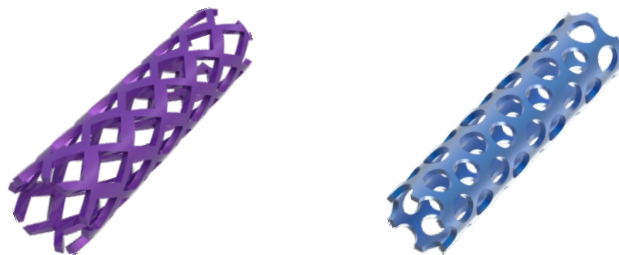
Adjustable Lumbar Expandable Cage

| | |
|---------|---------------|
| Ref. No | XL447.TW.D |
| Width | 22, 26 & 33mm |
| Degree | 3° & 8° |



Diamond Cut

| | |
|---------|---------------------------|
| Ref. No | XL410.D |
| Height | 10, 12, 14, 16, 18 & 20mm |
| Length | 100mm |



Diamond Cut

Round Cut

Round Cut

Expandable Cage

Features & Benefits

Minimized insertion height

- Help reduce nerve root retraction
- Minimizes impaction force

Controlled continuous expansion

- Allows an optimized endplate-to-endplate fit
- May help reduce the risk of over-distraction once in the disc space

In situ distraction

- Allows height restoration and an optimized fit



| | |
|---------|---------------------------------------|
| Ref. No | XL411.D.S |
| Dia Ø | 12, 14, 16 & 18 |
| Size | 20 X 25, 25 X 35, 45 X 55 & 55 X 75mm |

Expandable Jack Cage

Features & Benefits

In situ distraction – Allows precise adjustment of the implant height

Large filling volume for bone/bone substitute material

Clear instrument set and easy handling



| | |
|---------|----------------------------------|
| Ref. No | XL422.TD.S |
| Dia Ø | 12, 14 & 16 |
| Size | 20 X 25, 25 X 32.5 & 30 X 42.5mm |



pain was past

make pain free life your future

34 *Years of*
Dedication

ORTHO LIFE SYSTEMS PVT. LTD.

Corporate Office & Works: D-111, Okhla Industrial Area, Phase 1, New Delhi-110020, India

Sales Office: 49, Church Road, Bhogal, Jangpura, New Delhi-110014, India

Phone: +91-11-41324393, 42851229 | Toll Free: 1800 121 1190 | Email: info@xlo.in | Web: www.xlo.in

www.xlo.in