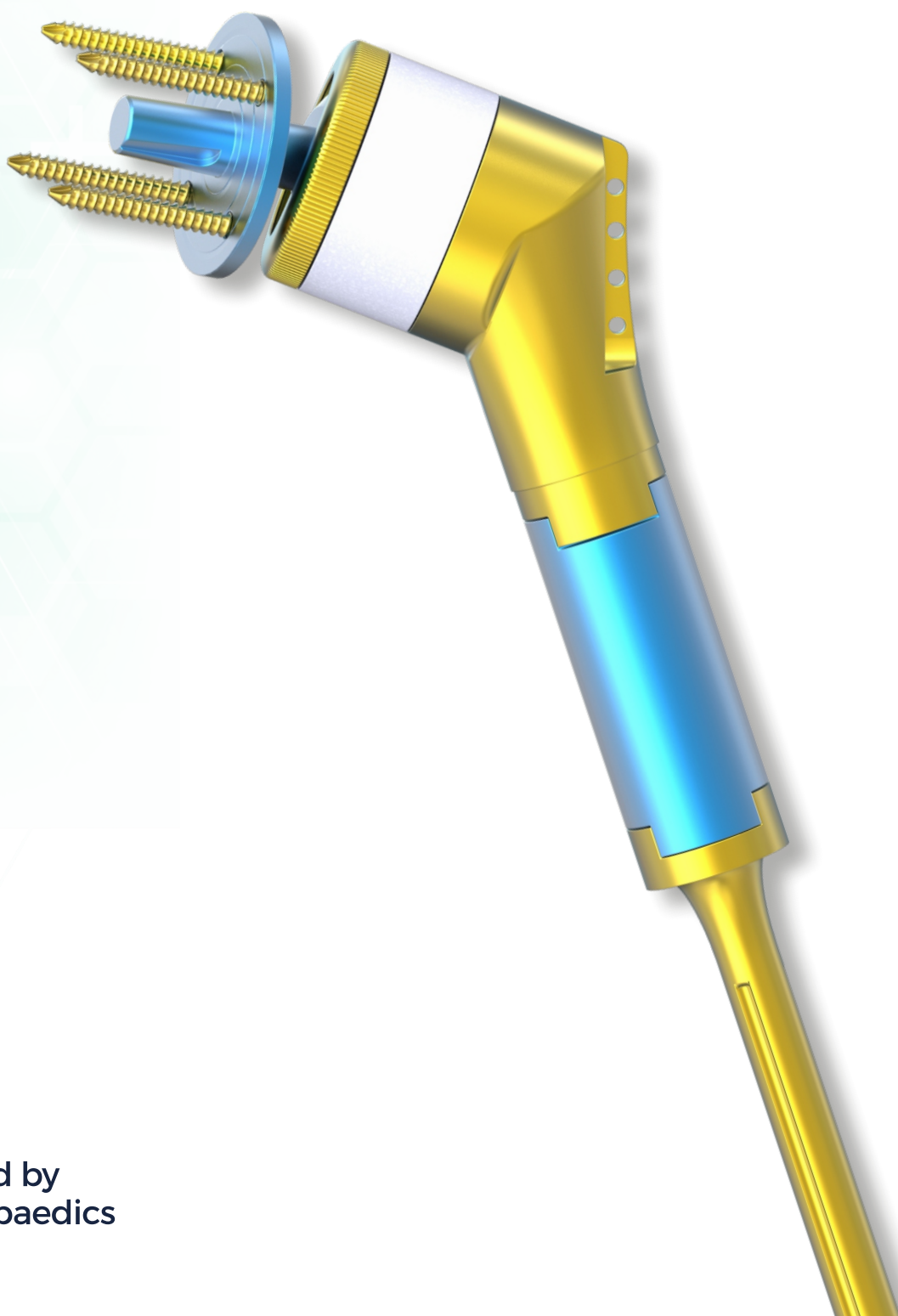


# xl-infinity

## Reverse Shoulder



XLO, established in 1992, has emerged as a pioneering force in the field of orthopaedic implants. The company is dedicated to enhancing patient outcomes and improving quality of life through innovative solutions in orthopaedics.

With a strong emphasis on quality and precision, **XLO a US FDA, CE, ISO13485:2016, WHO:GMP, ISO 9001:2015 & Indian FDA** has positioned itself as a leader in the design, development, and manufacturing of advanced orthopaedic implants.

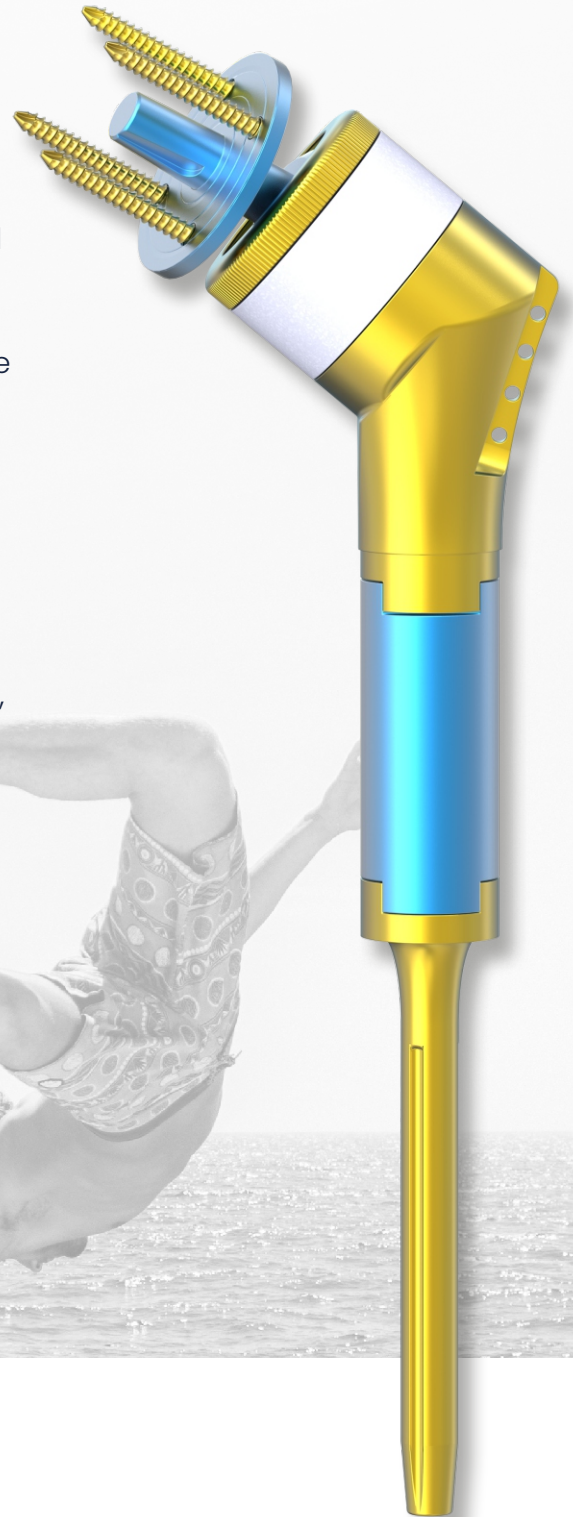
XLO offers the most extensive range of Cementless & Cemented Joint Replacement Implants, Trauma Implants, 3d Printed Patient Specific Implants & Instruments along with Bone Cement with a state-of-the-art manufacturing facility located in New Delhi, India. This facility is equipped with advanced technology that supports the production of high-quality orthopaedic implants while adhering to strict regulatory standards.

The company has established a pan-India presence, ensuring that its products are accessible across the country. Furthermore, XLO exports its innovative solutions worldwide, contributing significantly to global healthcare advancements in orthopaedics.



# xl-infinity Reverse Shoulder

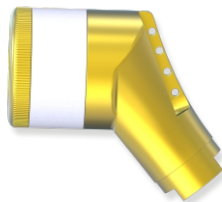
- Cancer is a genetic disease caused by growth promoting proto-oncogenes, growth inhibiting tumour suppressor genes and genes regulating cell death or apoptosis. when a cell starts growing in an uncontrolled manner it leads to cancer and this mass of fast growing cells damages normal tissue and bone structure.
- These implants are manufactured within an integrated program, under the aegis of the performing surgeon and XLO – for the structural design, material configuration, dynamics of motion desired, and longevity of the prosthesis for enhancing the stability of decayed bone joints & thereby improve the quality of life of these critical patients.
- XLO- Joint Resection Prosthesis are available for the bone anatomies in Titanium & Stainless Steel.
- These implants are both modular and fixed & are manufactured as per surgeons specifications, from case to case.
- XLO offers a wide range of Modular & Customized & Innovative Implants for Joint Resection and Replacement, which are unique in design, composite in structure, provide wide flexibility during surgery, are extremely versatile and offer post operative natural mobility to terminally ill patients suffering from osteosarcoma.





## Reverse Shoulder Component, Constraint

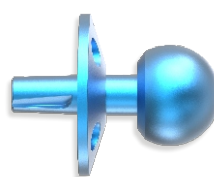
Titanium	Stainless Steel
2005-0T-65	2005-0S-65



## Glenoid with Fixed Humerus Head

Length	Titanium	Stainless Steel
47mm	2030-0T-47/-3	2030-0S-47/-3
50mm	2030-0T-50/0	2030-0S-50/0
53mm	2030-0T-53/+3	2030-0S-53/+3

Small



Length	Titanium	Stainless Steel
47mm	2035-0T-47/-3	2035-0S-47/-3
50mm	2035-0T-50/0	2035-0S-50/0
53mm	2035-0T-53/+3	2035-0S-53/+3

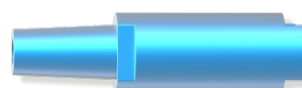
Medium

Length	Titanium	Stainless Steel
47mm	2040-0T-47/-3	2040-0S-47/-3
50mm	2040-0T-50/0	2040-0S-50/0
53mm	2040-0T-53/+3	2040-0S-53/+3

Large

## Resection Spacer

Length	Titanium	Stainless Steel
30mm	605-0T-30	605-0S-30
40mm	605-0T-40	605-0S-40
50mm	605-0T-50	605-0S-50
60mm	605-0T-60	605-0S-60
70mm	605-0T-70	605-0S-70
80mm	605-0T-80	605-0S-80
90mm	605-0T-90	605-0S-90
100mm	605-0T-100	605-0S-100



## Humerus Stem

Length	Titanium	Stainless Steel
6mm x 70mm	606-0T-06-70	606-0S-06-70
7mm x 70mm	606-0T-07-70	606-0S-07-70
8mm x 70mm	606-0T-08-70	606-0S-08-70
6mm x 100mm	606-0T-06-100	606-0S-06-100
7mm x 100mm	606-0T-07-100	606-0S-07-100
8mm x 100mm	606-0T-08-100	606-0S-08-100





### Cortical Screw Ø3.5mm, Self Tapping

Length	Titanium	Stainless Steel
10mm	Ti-104-10	104-10
12mm	Ti-104-12	104-12
14mm	Ti-104-14	104-14
16mm	Ti-104-16	104-16
18mm	Ti-104-18	104-18
20mm	Ti-104-20	104-20
22mm	Ti-104-22	104-22
24mm	Ti-104-24	104-24
26mm	Ti-104-26	104-26
28mm	Ti-104-28	104-28
30mm	Ti-104-30	104-30
32mm	Ti-104-32	104-32
34mm	Ti-104-34	104-34
36mm	Ti-104-36	104-36
38mm	Ti-104-38	104-38
40mm	Ti-104-40	104-40
42mm	Ti-104-42	104-42
44mm	Ti-104-44	104-44
45mm	Ti-104-45	104-45
46mm	Ti-104-46	104-46
48mm	Ti-104-48	104-48
50mm	Ti-104-50	104-50
55mm	Ti-104-55	104-55
60mm	Ti-104-60	104-60
65mm	Ti-104-65	104-65



**pain was past**

make pain free life your future



**34** *Years of*  
Dedication

**ORTHO LIFE SYSTEMS PVT. LTD.**

Corporate Office & Works: D-111, Okhla Industrial Area, Phase 1, New Delhi-110020, India

Sales Office: 49, Church Road, Bhogal, Jangpura, New Delhi-110014, India

Phone: +91-11-41324393, 42851229 | Toll Free: 1800 121 1190 | Email: [info@xlo.in](mailto:info@xlo.in) | Web: [www.xlo.in](http://www.xlo.in)

[www.xlo.in](http://www.xlo.in)