

**xl-elite**

**Modular Ankle**  
*Replacement Systems*



XLO, established in 1992, has emerged as a pioneering force in the field of orthopaedic implants. The company is dedicated to enhancing patient outcomes and improving quality of life through innovative solutions in orthopaedics.

With a strong emphasis on quality and precision, **XLO a US FDA, CE, ISO13485:2016, WHO:GMP, ISO 9001:2015 & Indian FDA** has positioned itself as a leader in the design, development, and manufacturing of advanced orthopaedic implants.

XLO offers the most extensive range of Cementless & Cemented Joint Replacement Implants, Trauma Implants, 3d Printed Patient Specific Implants & Instruments along with Bone Cement with a state-of-the-art manufacturing facility located in New Delhi, India. This facility is equipped with advanced technology that supports the production of high-quality orthopaedic implants while adhering to strict regulatory standards.

The company has established a pan-India presence, ensuring that its products are accessible across the country. Furthermore, XLO exports its innovative solutions worldwide, contributing significantly to global healthcare advancements in orthopaedics.



# xl-elite Ankle System

Wherever you go in life, your ankles take you there. That's why XLO has worked very hard to innovate solutions to relieve ankle pain. With our XL-Elite Total Ankle System we go a step beyond relieving ankle pain by creating implants that attempt to restore natural motion. Because no two ankles are exactly alike, we've designed our Total Ankle System to offer your doctor options to fit your ankle and increase your satisfaction.

XL-Elite System is a third generation total ankle replacement with advanced coating technologies and easy to use instrumentation.

The design of XL-Elite Systems is further enhanced through its titanium raw material with its reduction in polyethylene wear, and the Biomimetic Cementless Technology which provides rapid integration and enhanced longevity.

Simple, Easy to use instrumentation simplifies the surgical technique and allows for reproducible results time after time

## ► Mobility

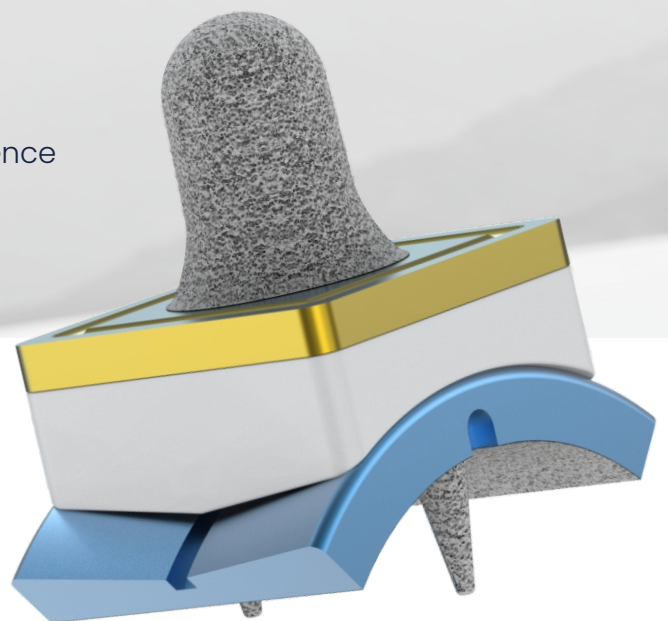
Minimising constraint to maintain range of motion

- Tibial freedom for rotational and translational movement
- Up to 26° dorsiflexion and 16° plantarflexion
- Restoring ankle alignment and talus centre of rotation

## ► Longevity

Advanced technologies to improve implant function & longevity

- Titanium for a low wear solution
- Biomimetic Cement less Technology
- 32 years of Joint Replacement Manufacturing Experience

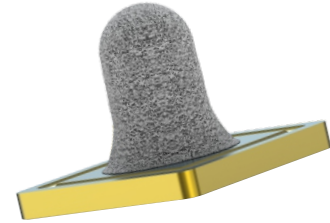


## Tibia Component Dual Porous Coated

Size	Titanium
Small	926C-0T-26S
Medium	928C-0T-28M
Large	930C-0T-30L

## Tibia Component

Size	Titanium
Small	926-0T-26S
Medium	928-0T-28M
Large	930-0T-30L

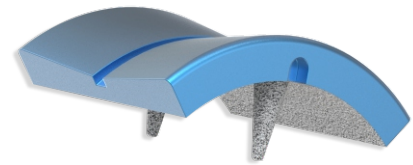


## Talus Component, Dual Porous Coated

Size	Titanium
Small	926C-0T-34S
Medium	928C-0T-36M
Large	930C-0T-38L

## Talus Component

Size	Titanium
Small	926-0T-34S
Medium	928-0T-36M
Large	930-0T-38L



## Polyethylene Insert

Reference	Size
926-0U-06S	Small-6mm
926-0U-08S	Small-8mm
926-0U-10S	Small-10mm
928-0U-06M	Medium-6mm
928-0U-08M	Medium-8mm
928-0U-10M	Medium-10mm
930-0U-06L	Large-6mm
930-0U-08L	Large-8mm
930-0U-10L	Large-10mm





**pain was past**

make pain free life your future

**34** *Years of*  
Dedication

**ORTHO LIFE SYSTEMS PVT. LTD.**

Corporate Office & Works: D-111, Okhla Industrial Area, Phase 1, New Delhi-110020, India

Sales Office: 49, Church Road, Bhogal, Jangpura, New Delhi-110014, India

Phone: +91-11-41324393, 42851229 | Toll Free: 1800 121 1190 | Email: info@xlo.in | Web: www.xlo.in

[www.xlo.in](http://www.xlo.in)