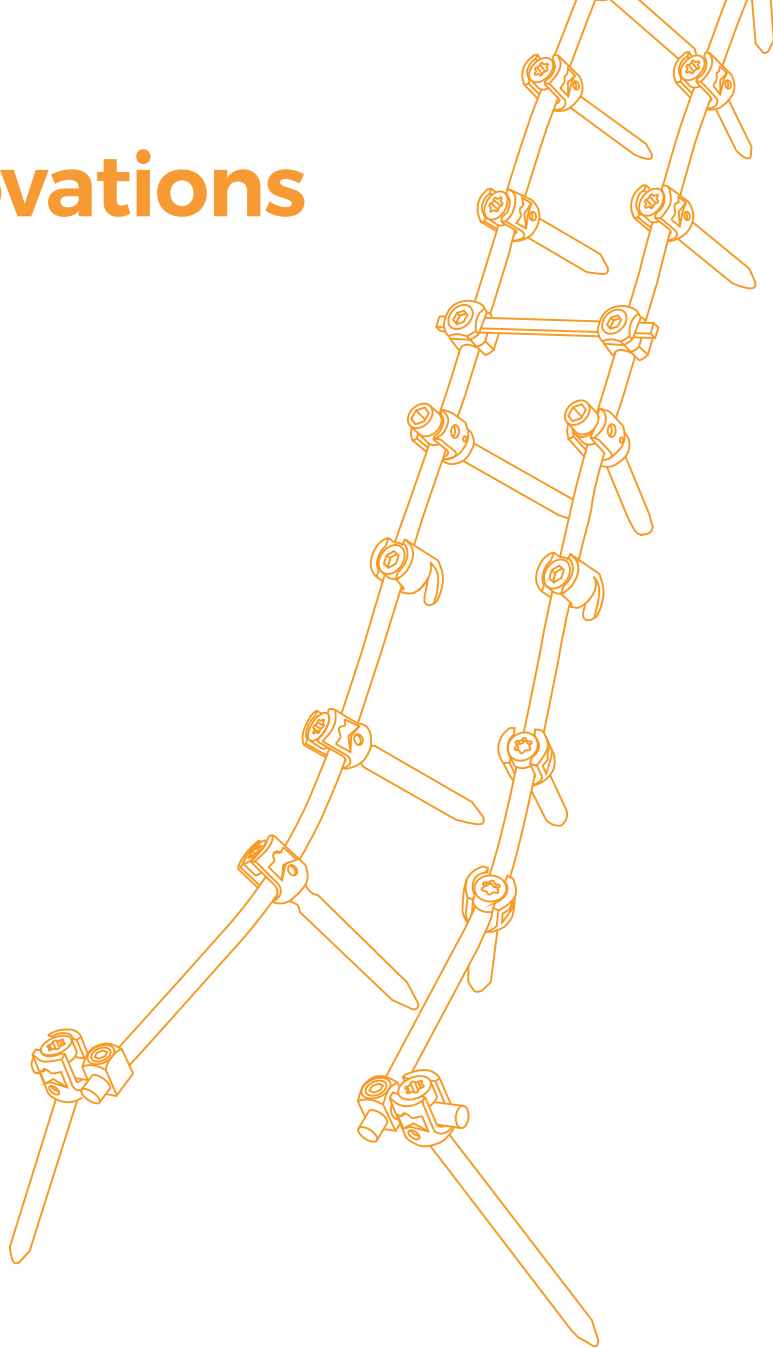


# xl-spine innovations

## Spine System

**xlo**  
trusted by  
Orthopaedics



XLO, established in 1992, has emerged as a pioneering force in the field of orthopaedic implants. The company is dedicated to enhancing patient outcomes and improving quality of life through innovative solutions in orthopaedics.

With a strong emphasis on quality and precision, **XLO a US FDA, CE, ISO13485:2016, WHO:GMP, ISO 9001:2015 & Indian FDA** has positioned itself as a leader in the design, development, and manufacturing of advanced orthopaedic implants.

XLO offers the most extensive range of Cementless & Cemented Joint Replacement Implants, Trauma Implants, 3d Printed Patient Specific Implants & Instruments along with Bone Cement with a state-of-the-art manufacturing facility located in New Delhi, India. This facility is equipped with advanced technology that supports the production of high-quality orthopaedic implants while adhering to strict regulatory standards.

The company has established a pan-India presence, ensuring that its products are accessible across the country. Furthermore, XLO exports its innovative solutions worldwide, contributing significantly to global healthcare advancements in orthopaedics.



# xl-spine innovations Pedicle Screw System

## Features & Benefits

### Optimized Visualization and Access

Implants have a low profile and reducers are designed with minimal bulk for improved visualization.

### Locking Mechanism

Optimized buttress thread on the set screw minimizes the potential for head splay and cross threading.

### Self-tapping screw tip

Aggressive cutting flute is designed to provide surgeons the option of eliminating the tapping step of the surgical procedure.

## Monoaxial Pedicle Screw

Ref. No	Dia(Ø)	Length
XL101.45.L	Ø4.5mm	25mm To 45mm
XL102.55.L	Ø5.5mm	30mm To 50mm
XL103.65.L	Ø6.5mm	30mm To 50mm



## Polyaxial Pedicle Screw

Ref. No	Dia(Ø)	Length
XL104.45.L	Ø4.5mm	25mm To 45mm
XL105.55.L	Ø5.5mm	30mm To 50mm
XL106.65.L	Ø6.5mm	30mm To 90mm
XL134.70.L	Ø7.0mm	30mm To 90mm



## Reduction Monoaxial Pedicle Screw

Ref. No	Dia(Ø)	Length
XL107.55.L	Ø5.5mm	30mm To 50mm
XL108.65.L	Ø6.5mm	30mm To 50mm



## Reduction Polyaxial Pedicle Screw

Ref. No	Dia(Ø)	Length
XL109.55.L	Ø5.5mm	30mm To 50mm
XL110.65.L	Ø6.5mm	30mm To 50mm



# xl-spine innovations Pedicle Screw System

## Features & Benefits

### **Dual Lead Thread form**

Substantial grip in osteoporotic bones. Color-coded by bone screw diameter.

### **Optimized Visualization and Access**

Implants have a low profile and reducers are designed with minimal bulk for improved visualization.

### **Locking Mechanism**

Optimized buttress thread on the set screw minimizes the potential for head splay and cross threading.

### **Self-tapping screw tip**

Aggressive cutting flute is designed to provide surgeons the option of eliminating the tapping step of the surgical procedure.

## Monoaxial Pedicle Screw

Ref. No	Dia(Ø)	Length
XL128.45.L	Ø4.5mm	25mm To 45mm
XL129.55.L	Ø5.5mm	30mm To 50mm
XL130.65.L	Ø6.5mm	30mm To 50mm



## Polyaxial Pedicle Screw

Ref. No	Dia(Ø)	Length
XL131.45.L	Ø4.5mm	25mm To 45mm
XL132.55.L	Ø5.5mm	30mm To 50mm
XL133.65.L	Ø6.5mm	30mm To 90mm





# xl-spine innovations Pedicle Screw System

## Features & Benefits

### **H. A. Coating**

Eliminates the problem of screw loosening irrespective of gender, age, number of level stabilised or whether there was previous lumbar surgery. Color-coded by bone screw diameter.

### **Optimized Visualization and Access**

Implants have a low profile and reducers are designed with minimal bulk for improved visualization.

### **Locking Mechanism**

Optimized buttress thread on the set screw minimizes the potential for head splay and cross threading.

## Monoaxial Pedicle Screw

Ref. No	Dia(Ø)	Length
XL426.45.L	Ø4.5mm	25mm To 45mm
XL427.55.L	Ø5.5mm	30mm To 50mm
XL428.65.L	Ø6.5mm	30mm To 50mm



## Polyaxial Pedicle Screw

Ref. No	Dia(Ø)	Length
XL429.45.L	Ø4.5mm	25mm To 45mm
XL430.55.L	Ø5.5mm	30mm To 50mm
XL431.65.L	Ø6.5mm	30mm To 90mm



## Reduction Polyaxial Pedicle Screw

Ref. No	Dia(Ø)	Length
XL436.55.L	Ø5.5mm	30mm To 50mm
XL437.65.L	Ø6.5mm	30mm To 50mm



# xl-spine innovations Pedicle Screw System

## Features & Benefits

It helps to inject the bone cement into the vertebral body and eliminates the problem of screw loosening irrespective of gender, age, number of level stabilised or whether there was previous lumbar surgery.  
Color-coded by bone screw diameter.

### **Optimized Visualization and Access**

Implants have a low profile and reducers are designed with minimal bulk for improved visualization.

### **Locking Mechanism**

Optimized buttress thread on the set screw minimizes the potential for head splay and cross threading.

## Polyaxial Pedicle Screw

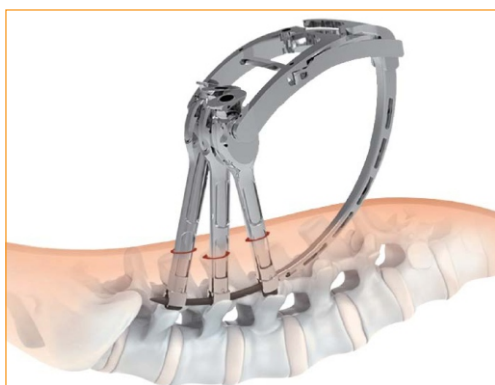
Ref. No	Dia(Ø)	Length
XL131.45.L	Ø4.5mm	25mm To 45mm
XL132.55.L	Ø5.5mm	30mm To 50mm
XL133.65.L	Ø6.5mm	30mm To 90mm



# xl-spine innovations MIS Spine Pedicle Screw

## Features & Benefits

Rod Insertion System provides surgeons with next generation technology that will revolutionize the future of spine care.



### MIS Spine Pedicle Screw

Ref. No	Dia(Ø)	Length
XL432.55.L	Ø4.5mm	25mm To 45mm
XL433.60.L	Ø5.5mm	30mm To 50mm
XL434.65.L	Ø6.5mm	30mm To 50mm
XL435.70.L	Ø7.0mm	30mm To 50mm

### MIS Screw Rod, Curved

Ref. No	Length
XL442.L	40mm to 100mm (5 mm Variation) 110mm & 120mm

### MIS Screw Rod, Straight

Ref. No	Length
XL444.L	40mm to 200mm (10 mm Variation)



# xl-spine innovations MIS Spine Pedicle Screw

## Features & Benefits

Tail tab stabilizes long arms during insertion & designed breakable before rod placement

80mm long arm applicable for all body types integrated fabrication ensures safe implantation

Gaps at long arm tail complied with the reduction clamp facilitates rod compression and spondylolisthesis reduction

Unique reversed thread technology & star recess minimize worn thread & shoving force at screw tail

Low profile, smaller screw tail basal area & duo thread enhance screw intensity, pullout strength and insertion speed

### Monoaxial Pedicle Screw

Ref. No	XL138.D.L
Dia(Ø)	Ø4.5, Ø5.0, Ø5.5, Ø6.0, Ø6.5, Ø7.0 & Ø7.5
Length	25MM TO 55MM (5mm Increments)

### UNIAXIAL Pedicle Screw

Ref. No	XL139.D.L
Dia(Ø)	Ø5.0, Ø5.5, Ø6.0, Ø6.5, Ø7.0 & Ø7.5
Length	35MM TO 55MM (5mm Increments)

### POLYAXIAL Pedicle Screw

Ref. No	XL140.D.L
Dia(Ø)	Ø5.5, Ø6.0, Ø6.5, Ø7.0 & Ø7.5
Length	35MM TO 55MM (5mm Increments)



### MIS Screw Rod, Curved

Ref. No	Length
XL442.L	40mm to 100mm (5 mm Variation)
	110mm & 120mm

### MIS Screw Rod, Straight

Ref. No	Length
XL444.L	40mm to 200mm (10 mm Variation)



## XL-Occifix screw connector (Single Hole)

Ref. No XL214.01



## XL-Occifix screw connector (Double Hole)

Ref. No XL214.02



## XL-Occifix screw connector Open (Single Hole)

Ref. No XL215.01



## XL-Occifix screw connector Open (Double Hole)

Ref. No XL215.02



## 3.5 mm Laminar Hook

Ref. No XL136.35

## 5.5 mm Laminar Hook

Ref. No XL136.55





## Multispan Crosslink Connector

Ref. No	Length
XL446.XS	30-34 mm
XL446.S	34-42 mm
XL446.M	40-53 mm
XL446.L	50-70 mm



## Connecting Rod 5.5 mm - One Side Hex

Ref. No	Length
XL111.55.50	50mm
XL111.55.60	60mm
XL111.55.70	70mm
XL111.55.80	80mm
XL111.55.90	90mm
XL111.55.100	100mm
XL111.55.110	110mm
XL111.55.120	120mm
XL111.55.130	130mm
XL111.55.140	140mm
XL111.55.150	150mm
XL111.55.200	200mm
XL111.55.250	250mm
XL111.55.300	300mm



## Transverse Connector - Square

Ref. No	XL122
---------	-------

## Transverse Connector Rod - Square

Ref. No	Length
XL123.50	50mm
XL123.60	60mm
XL123.70	70mm
XL123.80	80mm
XL123.90	90mm
XL123.100	100mm
XL123.110	110mm
XL123.120	120mm



Posterior Cervical Connecting Rod, Ø3.5mm

Ref. No XL205.35.300

Length 300mm



Pre Bend Connecting Rod, Ø3.5mm

Ref. No XL210

Length 100mm X 200mm



Tapered Spine Rod Ø3.5mm X Ø5.5mm

Ref. No XL211.300

Length 100mm X 200mm



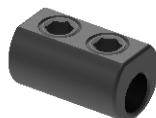
Inline connector 3.5mm to 5.5mm

Ref. No XL218



Domino connector  
3.5mm to 5.5mm

Ref. No XL219



Triangle connector  
3.5mm to 5.5mm

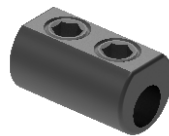
Ref. No XL220



# xl-spine innovations Spine Connecting System

Inline Connector – 5.5 X 5.5mm

Ref. No XL145



Inline Connector – Long 5.5 X 5.5mm

Ref. No XL210



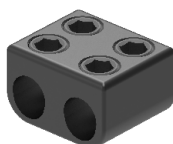
Spine Staple

Ref. No XL113



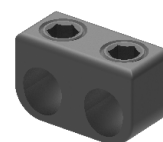
Domino Connector –  
Square 5.5 X 5.5mm

Ref. No XL218



Domino Connector –  
Rectangle 5.5 X 5.5mm

Ref. No XL144



Lateral Connector 5.5mm

Ref. No Length

XL147.20L 20mm

XL147.30L 30mm

XL147.40L 40mm



20 mm



30 mm



40 mm

### Ø3.5mm Posterior Cervical Screw (Short Thread)

Ref. No	XL222.35.L
Length	26mm to 40mm (2mm Increment)

Flower Design for Extra angle Movement



### Ø3.5mm Posterior Cervical Screw (Full Thread)

Ref. No	XL223.35.L
Length	10mm to 40mm (2mm Increment)

### Ø4.0mm Posterior Cervical Screw (Short Thread)

Ref. No	XL224.40.L
Length	26mm to 40mm (2 mm Increment)

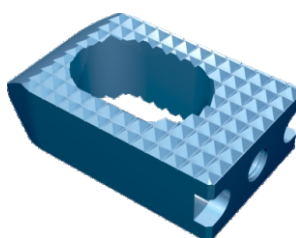
### Ø4.0mm Posterior Cervical Screw (Full Thread)

Ref. No	XL225.40.L
Length	10mm to 40mm (2mm Increment)



### Posterior Cervical C1-C2 Spacer

Ref. No	Length
XL451.T30	3.0mm
XL451.T35	3.5mm
XL451.T40	4.0mm
XL451.T45	4.5mm
XL451.T50	5.0mm



# xl-spine innovations Posterior Cervical System

## Features & Benefits

Small Profile of the screw head

Wide screw angle and low profile allows for easy adaptation of the construct to patient anatomy

Accept 3.5 mm Rod

Available in 3.5 mm and 4.0 mm Diameter

Partially Thread option available in 3.5 mm and 4.0 mm Diameter



Short Threaded Shaft



Set screw thread design ensures maximum strength and stabilization of the polyaxial construct



Posterior Cervical Connector

Ref. No XL206

## Ø3.5mm Posterior Cervical Screw (Short Thread)

Ref. No XL201.35.L

Length 26mm to 40mm (2mm Increment)

## Ø3.5mm Posterior Cervical Screw (Full Thread)

Ref. No XL202.35.L

Length 12mm to 30mm (2mm Increment)

## Ø4.0mm Posterior Cervical Screw (Short Thread)

Ref. No XL203.40.L

Length 26mm to 40mm (2 mm Increment)

## Ø4.0mm Posterior Cervical Screw (Full Thread)

Ref. No XL202.40.L

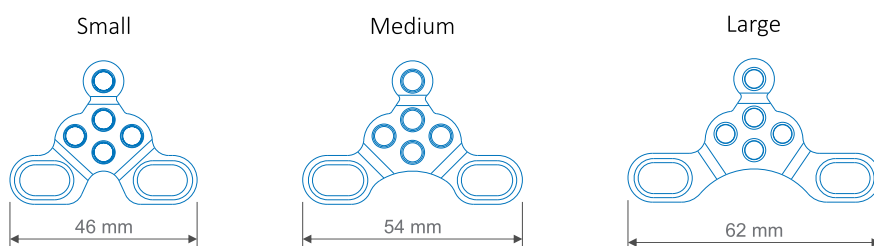
Length 26mm to 40mm (2 mm Increment)



# xl-spine innovations Adjustable Occipital Plate

## Adjustable Occipital Plates Type II

XLO Offers three adjustable occipital plate sizes to accommodate the patient's anatomy. An occipital strap is available for fixation to the superior midline fixation hole. The XLO System offers Ø4.5 mm occipital bone screws that have cortical threads. The XLO System has many occipital rod options including: pre-cut titanium, pre-contoured titanium. Rods transition to a Ø 3.5 mm diameter occipital portion to allow for a stronger construct.



## Adjustable Occipital Plates Type II

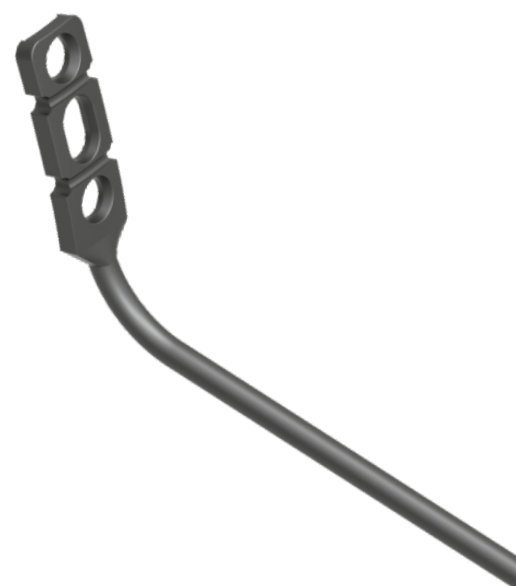
Ref. No	Size
XL213.S	SMALL
XL213.M	MEDIUM
XL213.L	LARGE

## Plate Rod

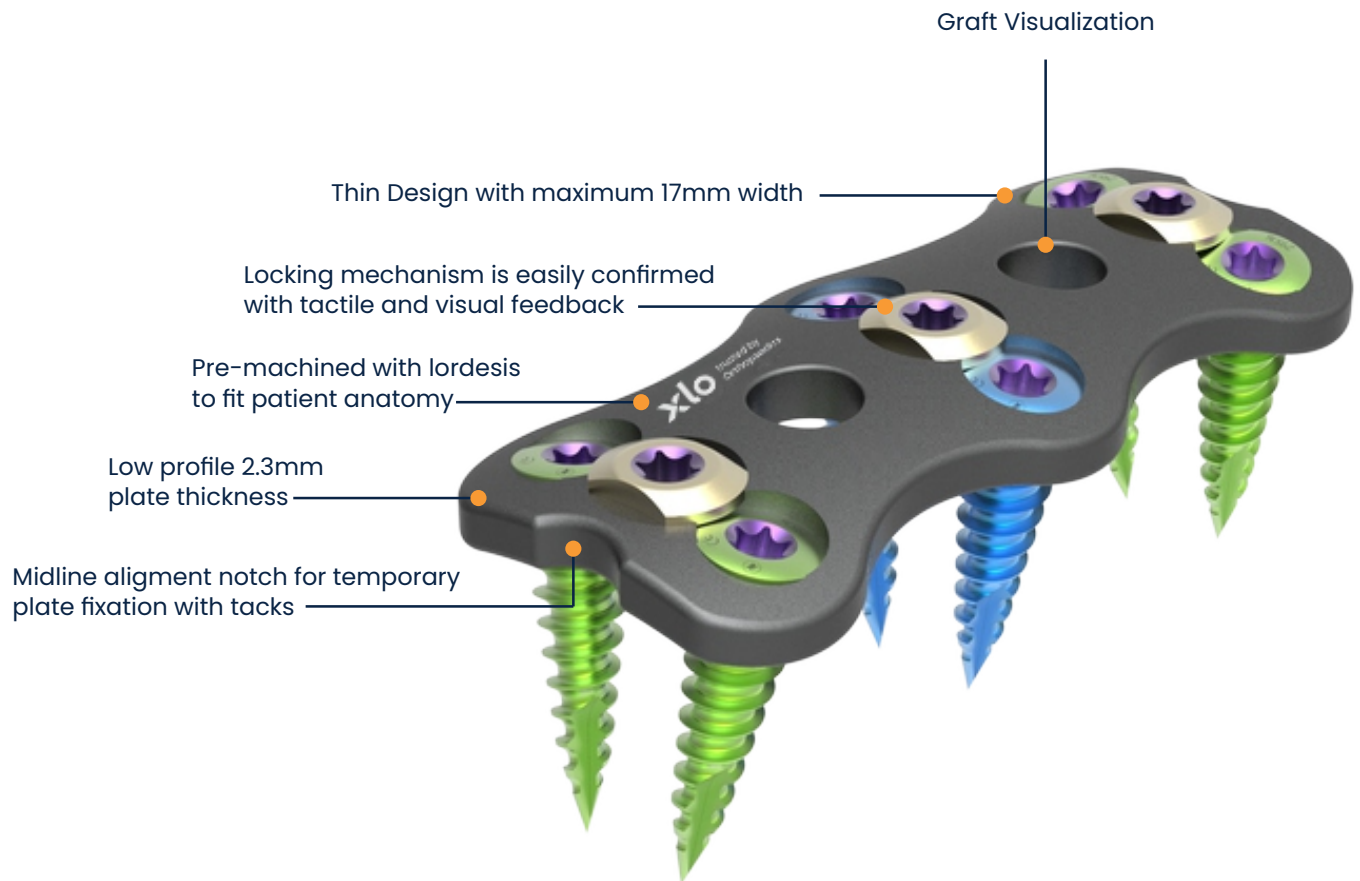
XLO offers two adjustable occipital plate sizes to accommodate the patient's anatomy. This Occifix plate is available two different sizes and it is combined with the Ø3.5mm diameter rod. The XLO System offers Ø4.5 mm occipital bone screws that have cortical threads. The XLO System has many occipital rod options including: pre-cut titanium, pre-contoured titanium. Rods transition to a Ø3.5 mm diameter occipital portion to allow for a stronger construct.

## Plate Rod

Ref. No	Size
XL212.100	100mm
XL212.200	200mm



# xl-spine innovations Anterior Cervical Plate



ACP hole accept both fixed angle  
& Variable angle bone screw



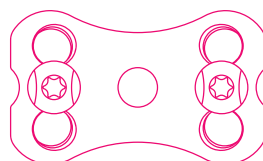
Fixed Angle Screw



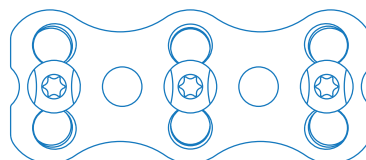
Variable angle Screw

### Anterior Cervical Spine Plate

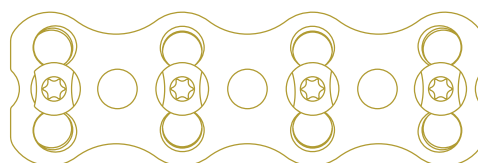
Ref. No	Length	Hole
XL448.21	21mm	4
XL448.23	23mm	4
XL448.25	25mm	4
XL448.27	27mm	4
XL448.29	29mm	4
XL448.31	31mm	4
XL448.33	33mm	4
XL448.35	35mm	4
XL448.37	37mm	4
XL448.39	39mm	6
XL448.41	41mm	6
XL448.43	43mm	6
XL448.45	45mm	6
XL448.47	47mm	6
XL448.49	49mm	6
XL448.55	55mm	6
XL448.54	54mm	8
XL448.66	57mm	8
XL448.57	60mm	8
XL448.69	63mm	8
XL448.60	66mm	8
XL448.72	69mm	8
XL448.63	72mm	8
XL448.75	75mm	8



4 Holes



6 Holes



8 Holes

### 4.0 Fixed angle Cervical Screw

Ref. No	Length
XL449.40.11	11mm
XL449.40.13	13mm
XL449.40.15	15mm
XL449.40.17	17mm
XL449.40.19	19mm



### 4.5 Fixed angle Cervical Screw

Ref. No	Length
XL449.45.11	11mm
XL449.45.13	13mm
XL449.45.15	15mm
XL449.45.17	17mm
XL449.45.19	19mm



### 4.0 Variable angle Cervical Screw

Ref. No	Length
XL450.40.11	11mm
XL450.40.13	13mm
XL450.40.15	15mm
XL450.40.17	17mm
XL450.40.19	19mm



### 4.5 Variable angle Cervical Screw

Ref. No	Length
XL450.45.11	11mm
XL450.45.13	13mm
XL450.45.15	15mm
XL450.45.17	17mm
XL450.45.19	19mm



# xl-spine innovations

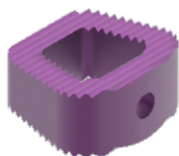
## Anterior Cervical Cages



Large grafting area to optimize bone fusion.



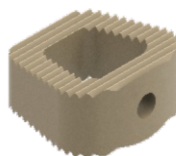
X-ray markers allows 3D-Visualization & radiological Identification.



**Titanium**

Ref. No XL407.H

Height 5, 6, 7, 8, 9, 10 & 11mm



**Peek**

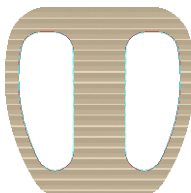
Ref. No XL415.H

Height 5, 6, 7, 8, 9, 10 & 11mm

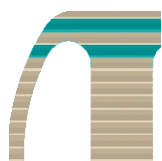
## D-Anterior Cervical Spine Plate



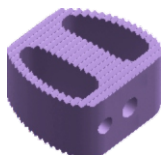
X-ray markers allows 3D-Visualization & radiological Identification.



Large grafting area to optimize bone fusion.



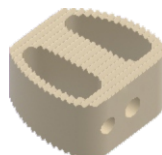
Implant teeth reduces likelihood of migration in any direction.



**Titanium**

Ref. No XL408.H

Height 5, 6, 7, 8, 9, 10 & 11mm



**Peek**

Ref. No XL416.H

Height 5, 6, 7, 8, 9, 10 & 11mm

# xl-spine innovations

## Anterior Cervical Cages



### Features & Benefits

#### **Natural Anatomical Profile**

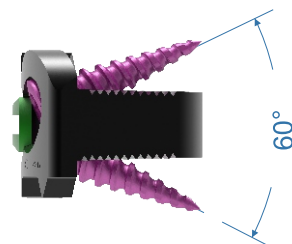
Integrated plate and spacer is designed to preserve the natural anatomical profile of the spine.

#### **Less Disruptive**

The system streamlines the entire ACDF procedure and facilitates a less invasive approach through a small incision with less retraction.

#### **Biomechanical Strength and Stability**

Biomechanically comparable to a traditional 2-level ACDF



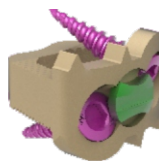
#### Titanium



Ref. No XL419.H

Height 5, 6, 7, 8 & 9mm

#### Peek



Ref. No XL424.H

Height 5, 6, 7, 8 & 9mm

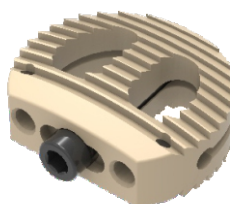
### Cervical Interbody Cage, Expandable – PEEK

Ref. No XL501.PH.LW

Height 4, 5, 6, 7, 8, 9 & 10mm

Length 14 & 16mm

Width 12 & 14mm





# xl-spine innovations

## Anterior Cervical Cages

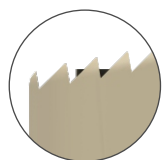
### Indication

Degenerative disc disease (DDD, defined as neck pain of discogenic origin degeneration of the disc confirmed by history and radiographic studies)

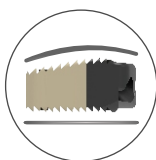
Spinal stenosis

Failed previous fusions

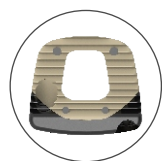
Pseudoarthrosis



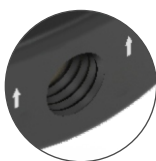
Aggressive tooth



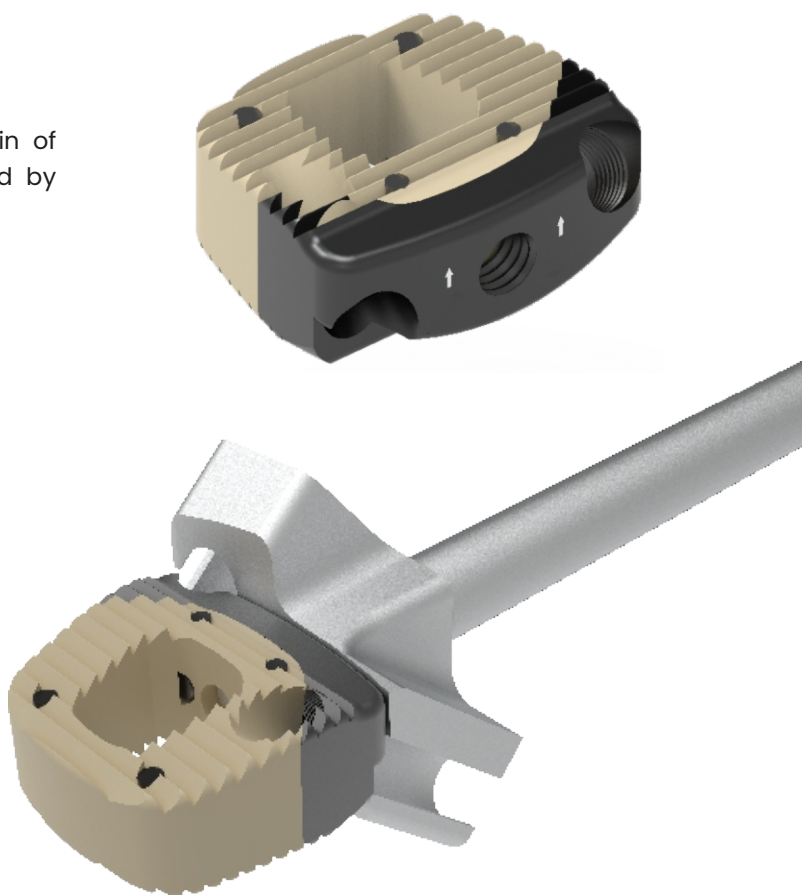
Anatomical Shape



Large BoneDraft Window



Threaded inserter allows for quick capture and stable insertion.



### Titanium

Ref. No XL421.H

Height 5, 6, 7, 8, 9 & 10mm

### Peek

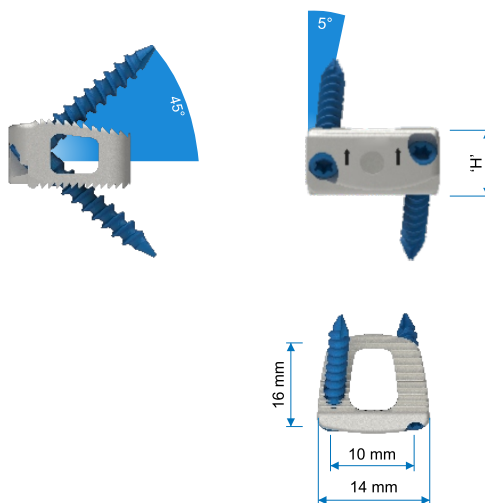
Ref. No XL425.H

Height 5, 6, 7, 8, 9 & 10mm

### PEEK with Bone Graft

Ref. No XL461.H

Height 5, 6, 7, 8, 9 & 10mm



### Features & Benefits

High mechanical strength and stability for demanding cervical surgical procedures

Simple surgical technique from preformed plates and fixed-angle screws

Self-locking screw

Accommodates autogenous bone graft to allow fusion to occur through the implant.

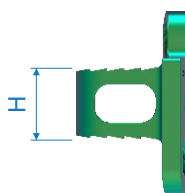
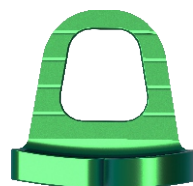
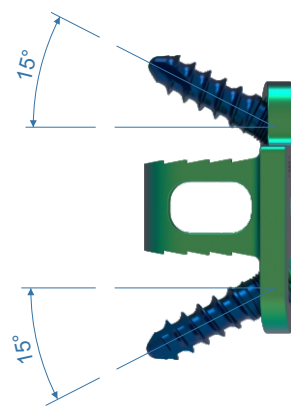
Self-drilling screw design offers quicker bone screw purchase.



### P Cervical Cage with Plate

Titanium

Ref. No	XL420.H
Height	5, 6, 7, 8, 9 & 10mm



# xl-spine innovations

## Expandable Jack Cage



### Features & Benefits

Anterior vertebral column stabilized to become load bearing

Vertebral bodies can be substituted

Cylindrical Hollow design offers to be filled implants with bone substitute.

The Implant is harbour easily & safely between the adjacent end plate of the vertebral bodies.

### Expandable Jack Cage with Plate

Ref. No	XL423.TD.S
Dia Ø	Ø 12, Ø 14 & Ø 16
Size	20 X 25, 25 X 32.5 & 30 X 42.5



### Expandable Plus Jack Cage with Plate

Ref. No	XL456.TD.S
Dia Ø	Ø 12, Ø 14 & Ø 16
Size	20, 25 & 30



***Expandable Jack Cage with Plate***

Ref. No	XL455.H.LW
Height	5, 6, 7 & 8mm
Length	14 & 16mm
Width	12 & 14mm



***Anterior Cervical Lag Screw – S/D, Cannulated***

Ref. No	XL152.L
Height	28mm to 50mm (2mm Increment)



### Indication

Advanced Discopathies

Extensive Decompression

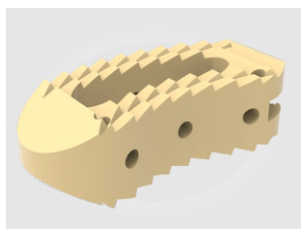
Spodylolisthesis

Failed disc surgery

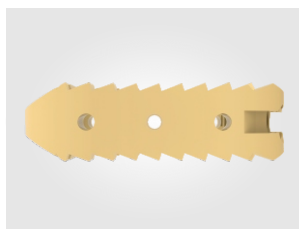
Re-current disc herniation

Post-operative instability

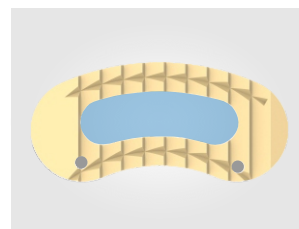
Lumber pseudarthrosis



Tapered tip facilitates easy insertion.



Anatomical shape and aggressive tooth pattern maximizes end plate contact and stability.



Large graft area allows substantial bone growth.

### Titanium

Ref. No	XL412.PH.L
Height	5, 6, 7, 8, 9, 10, 11, 12 & 13mm
Length	25 & 30mm

### Peek

Ref. No	XL417.PH.L
Height	5, 6, 7, 8, 9, 10, 11, 12 & 13mm
Length	25 & 30mm



### Features & Benefits

- Imported Medical Vesta material

Closed to human skeleton in modulus of elasticity share the stress with cancellous bone and facilitates fusion X-ray permeable and make fusion observation convenient after surgery

- Preset X-ray Marker

Facilitate confirming implant location during and after surgery

- Bullet shaped foreside

Easier insertion specially anteriorly

- Convex design

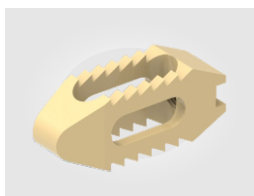
Fit closer to vertebral

Self-distracting intervertebral space at insertion

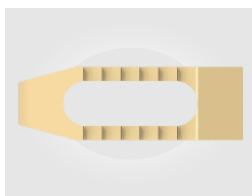
Facilitates maintenance and restoration of lumbar physiological curvature and prevent lumbago after surgery

- Serrated teeth surface

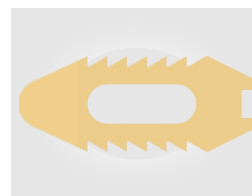
Provide ideal initial stability and no easy to come off between the adjacent end plate of the vertebral bodies.



Bullet shaped foreside



Preset X-ray Marker



Serrated teeth surface

### Titanium

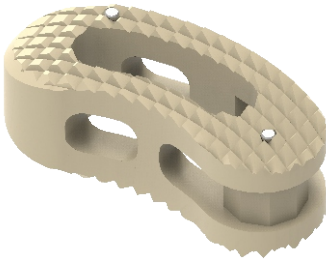
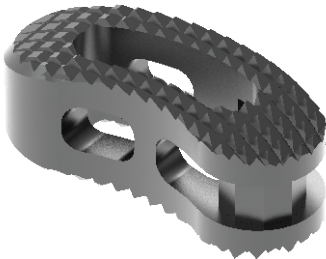
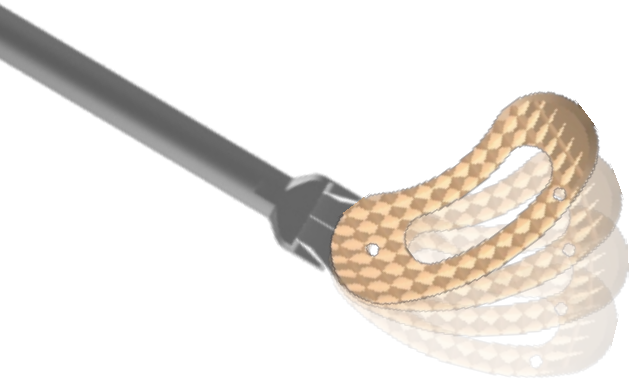
Ref. No	XL414.H.L
Height	7, 8, 9, 10, 11, 12, 13mm
Length	20 & 25mm

### Peek

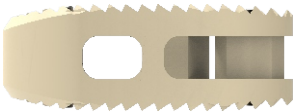
Ref. No	XL418.PH.L
Height	7, 8, 9, 10, 11, 12, 13mm
Length	20 & 25mm

Features & Benefits

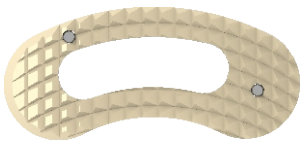
Large segmental bone graft area for better fusion, promote better graft integration and maximize contact area between vertebral end plate and bone graft.



Tapered tip facilitates  
easy insertion.



Anatomical shape and aggressive tooth  
pattern maximizes end plate  
contact and stability.



Large graft area allows  
substantial bone growth.

Titanium

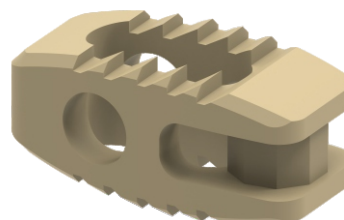
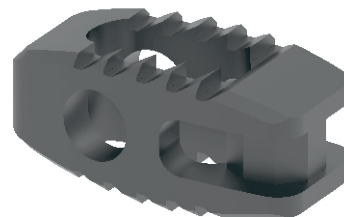
Ref. No	XL439.PH.LW
Height	7, 8, 9, 10, 11, 12, 13mm
Length	27 & 30mm
Width	10 & 12mm

Peek

Ref. No	XL441.PH.LW
Height	7, 8, 9, 10, 11, 12, 13mm
Length	27 & 30mm
Width	10 & 12mm

## Features & Benefits

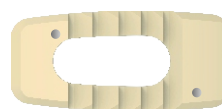
Large segmental bone graft area for better fusion, promote better graft integration and maximize contact area between vertebral end plate and bone graft.



Bullet shaped foreside



Serrated teeth surface



Preset X-ray Marker

### Titanium

Ref. No	XL440.TH.L
Height	7, 8, 9, 10, 11, 12, 13mm
Length	22, 26 & 32mm

### Peek

Ref. No	XL438.PH.L
Height	7, 8, 9, 10, 11, 12, 13mm
Length	22, 26 & 32mm

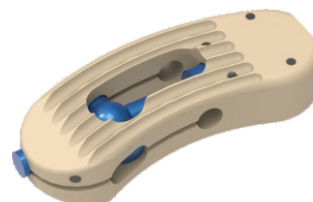
### ***PLIF Expandable PEEK Cage***

Ref. No	XL503.PH
Height	6 to 16mm



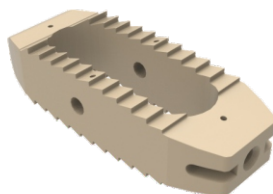
### ***TLIF Expandable PEEK Cage***

Ref. No	XL502.PH
Height	6 to 16mm



### ***OLIF Cage 0°***

Ref. No	XL457.45.H
Height	9 to 16mm



### ***OLIF Cage 6°***

Ref. No	XL458.45.H
Height	9 to 16mm

### ***OLIF Plate***

Ref. No	XL459.S	Small
	XL459.L	Large

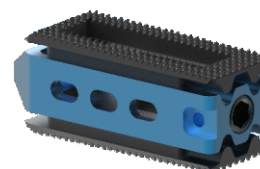


### ***OLIF S/T Screw***

Ref. No	XL460.L
Length	20 to 50 (5mm INC.)

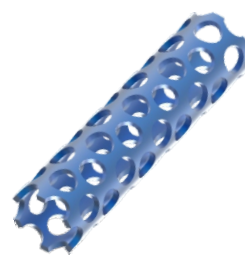
### ***Adjustable Lumbar Expandable Cage***

Ref. No	XL447.TW.D
Width	22, 26 & 33mm
Degree	3° & 8°



## Diamond Cut

Ref. No	XL410.D
Height	10, 12, 14, 16, 18 & 20mm
Length	100mm



Diamond Cut

Round Cut

## Round Cut

## Expandable Cage

### Features & Benefits

#### Minimized insertion height

- Help reduce nerve root retraction
- Minimizes impaction force

#### Controlled continuous expansion

- Allows an optimized endplate-to-endplate fit
- May help reduce the risk of over-distraction once in the disc space

#### In situ distraction

- Allows height restoration and an optimized fit



Ref. No	XL411.D.S
Dia Ø	12, 14, 16 & 18
Size	20 X 25, 25 X 35, 45 X 55 & 55 X 75mm

## Expandable Jack Cage

### Features & Benefits

*In situ distraction – Allows precise adjustment of the implant height*

*Large filling volume for bone/bone substitute material*

*Clear instrument set and easy handling*



Ref. No	XL422.TD.S
Dia Ø	12, 14 & 16
Size	20 X 25, 25 X 32.5 & 30 X 42.5mm

**pain was past**

make pain free life your future



**33** *Years of*  
Dedication

**ORTHO LIFE SYSTEMS PVT. LTD.**

Corporate Office & Works: D-111, Okhla Industrial Area, Phase 1, New Delhi-110020, India

Sales Office: 49, Church Road, Bhogal, Jangpura, New Delhi-110014, India

Phone: +91-11-41324393, 42851229 | Toll Free: 1800 121 1190 | Email: info@xlo.in | Web: www.xlo.in

[www.xlo.in](http://www.xlo.in)