

xl-synergy

**Modular Shoulder
Replacement Systems**



xlo trusted by
Orthopaedics

XLO, established in 1992, has emerged as a pioneering force in the field of orthopaedic implants. The company is dedicated to enhancing patient outcomes and improving quality of life through innovative solutions in orthopaedics.

With a strong emphasis on quality and precision, **XLO a US FDA, CE, ISO13485:2016, WHO:GMP, ISO 9001:2015 & Indian FDA** has positioned itself as a leader in the design, development, and manufacturing of advanced orthopaedic implants.

XLO offers the most extensive range of Cementless & Cemented Joint Replacement Implants, Trauma Implants, 3d Printed Patient Specific Implants & Instruments along with Bone Cement with a state-of-the-art manufacturing facility located in New Delhi, India. This facility is equipped with advanced technology that supports the production of high-quality orthopaedic implants while adhering to strict regulatory standards.

The company has established a pan-India presence, ensuring that its products are accessible across the country. Furthermore, XLO exports its innovative solutions worldwide, contributing significantly to global healthcare advancements in orthopaedics.



xl-synergy Shoulder Replacement

Strong solutions

Intraoperative flexibility assured by compatibility with LINK standard revision implant systems.

Less costly and time-consuming than comparable custom-made implants.

Specifically expanded

LINK MEGASYSTEM-C instrument set

– based on LINK instruments for the Endo-Model SL and MP Reconstruction Prosthesis System.

Reliable implants

Modularity enables the surgeon to respond flexibly to any intraoperative situation that may arise, taking into account the individual patient's requirements.

Intraoperative length modification possible in 10 mm increments.

Cementless anchorage following the Wagner principle.

Proven functionality

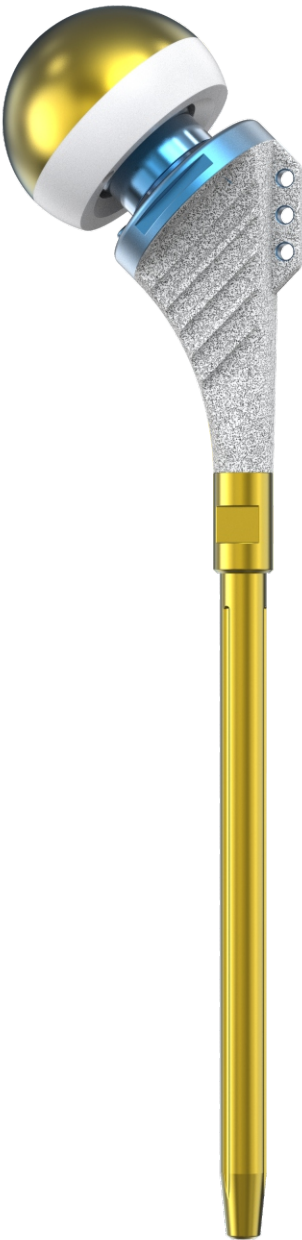
Manufactured from high-performance alloys.

Reliable coupling mechanisms and tapered connections.

Knee components based on the successful LINK Endo-Model Knee Prosthesis Systems, incorporating decades of experience.



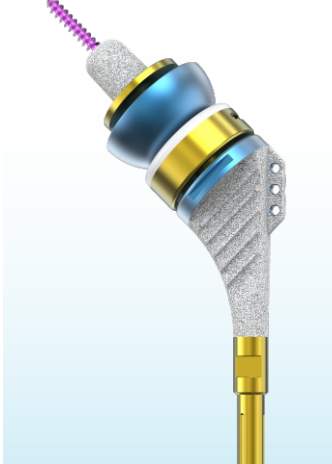
xl-synergy
Shoulder Replacement



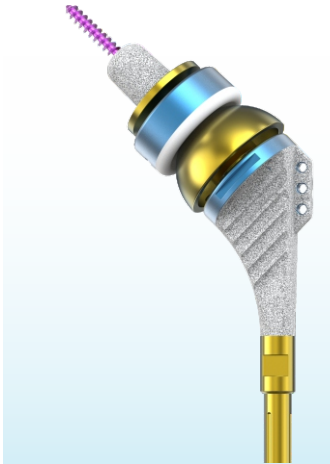
Hemi Shoulder



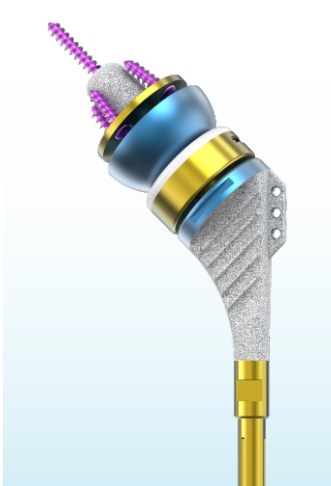
Total Shoulder



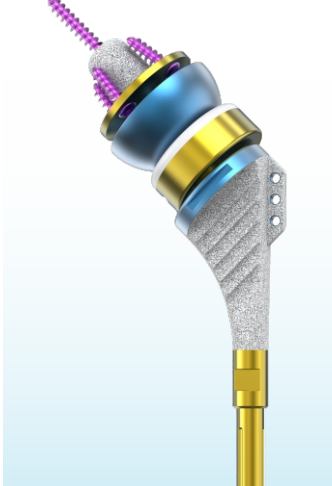
Reverse Shoulder with
Extra Small Glenoid



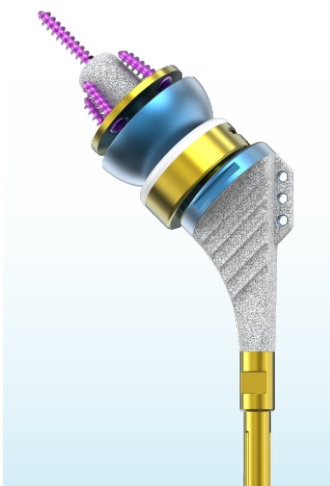
Total Shoulder with
Extra Small Glenoid



Reverse Shoulder
with 0° Insert



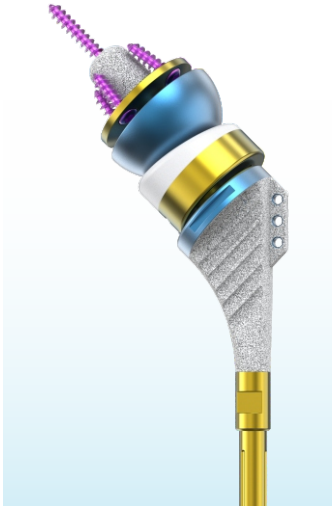
Reverse Shoulder with
0° Insert & Up Offset



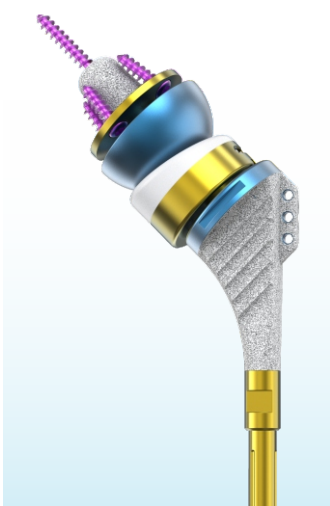
Reverse Shoulder with
0° Insert & Down Offset



Reverse Shoulder
with 10° Insert



Reverse Shoulder with
10° Insert & Up Offset

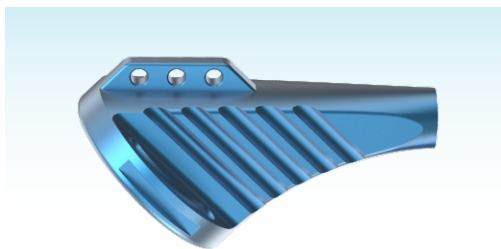


Reverse Shoulder with
10° Insert & Down Offset

xl-synergy Shoulder Replacement

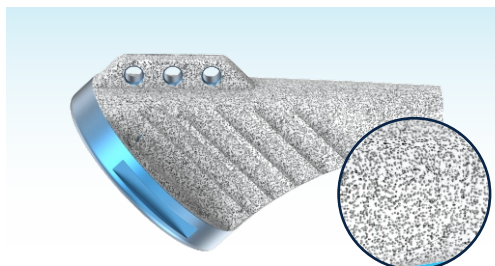


Proximal Humerus Component



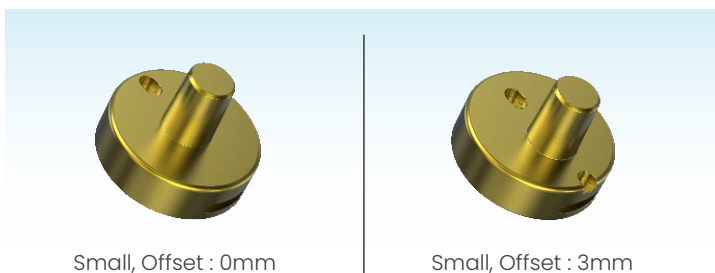
| Stainless Steel | Titanium |
|-----------------|------------|
| 3006-0S-45 | 3006-0T-45 |

Cementless Proximal Humerus Component



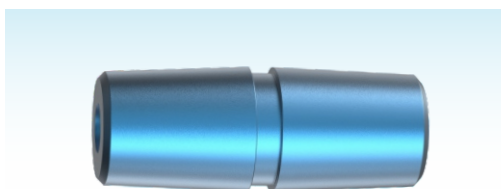
| Stainless Steel | Titanium |
|-----------------|----------------|
| 3006-0S-DPC-45 | 3006-0T-DPC-45 |

Shell



| Stainless Steel | Titanium | Size | Offset |
|-----------------|--------------|--------|--------|
| 3006-0S-30 | 3006-0T-30 | Small | 0mm |
| 3006-0S-33 | 3006-0T-33 | Medium | 0mm |
| 3006-0S-36 | 3006-0T-36 | Large | 0mm |
| 3006-3.0S-30 | 3006-3.0T-30 | Small | 3.0mm |
| 3006-1.5S-33 | 3006-1.5T-33 | Medium | 1.5mm |
| 3006-3.0S-36 | 3006-3.0T-36 | Large | 3.0mm |

Modular Neck



| Stainless Steel | Titanium |
|-----------------|---------------|
| 3006-0S-09/10 | 3006-0T-09/10 |

xl-synergy Shoulder Replacement



UHMWPE Insert 0°



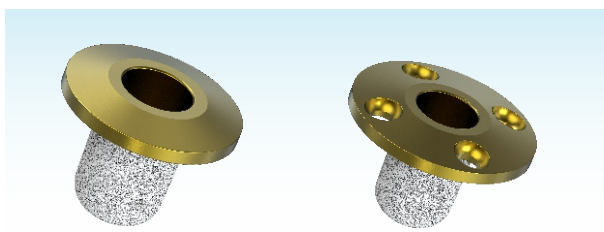
| Code | Size |
|------------|--------|
| 3006-0U-30 | Small |
| 3006-0U-33 | Medium |
| 3006-0U-36 | Large |

UHMWPE Insert 10°



| Code | Size |
|-------------|--------|
| 3006-10U-30 | Small |
| 3006-10U-33 | Medium |
| 3006-10U-36 | Large |

Cementless Glenoid Component



X.Small

Small

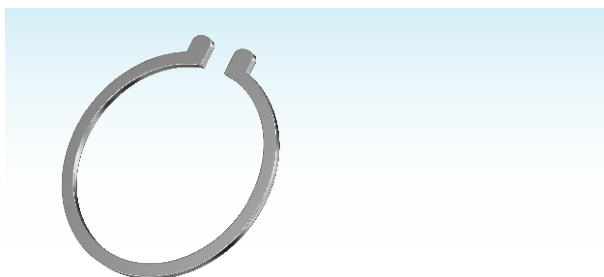
| Stainless Steel | Titanium | Size |
|-----------------|----------------|---------|
| 2007-0S-DPC-30 | 2007-0T-DPC-25 | X.Small |
| 2007-0S-DPC-33 | 2007-0T-DPC-30 | Small |
| 2007-0S-DPC-33 | 2007-0T-DPC-33 | Medium |
| 2007-0S-DPC-36 | 2007-0T-DPC-36 | Large |

Glenoid Component



| Stainless Steel | Titanium | Size |
|-----------------|------------|---------|
| 2007-0S-25 | 2007-0T-25 | X.Small |
| 2007-0S-30 | 2007-0T-30 | Small |
| 2007-0S-33 | 2007-0T-33 | Medium |
| 2007-0S-36 | 2007-0T-36 | Large |

Locking Ring



| Stainless Steel | Titanium | Size |
|-----------------|------------|--------|
| 3006-0S-25 | 3006-0T-25 | Small |
| 3006-0S-28 | 3006-0T-28 | Medium |
| 3006-0S-31 | 3006-0T-31 | Large |

Humerus Stem



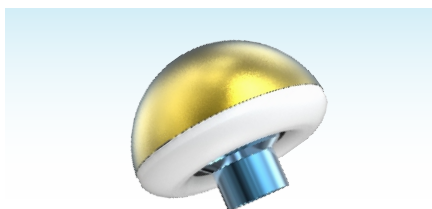
| Stainless Steel | Titanium | Size |
|-----------------|----------------|-------------|
| 2005-06-100 | 2005-0T-06-100 | 6mm x 100mm |
| 2005-06-120 | 2005-0T-06-120 | 6mm x 120mm |
| 2005-06-140 | 2005-0T-06-140 | 6mm x 140mm |
| 2005-06-160 | 2005-0T-06-160 | 6mm x 160mm |
| 2005-07-100 | 2005-0T-07-100 | 7mm x 100mm |
| 2005-07-120 | 2005-0T-07-120 | 7mm x 120mm |
| 2005-07-140 | 2005-0T-07-140 | 7mm x 140mm |
| 2005-07-160 | 2005-0T-07-160 | 7mm x 170mm |
| 2005-08-100 | 2005-0T-08-100 | 8mm x 100mm |
| 2005-08-120 | 2005-0T-08-120 | 8mm x 120mm |
| 2005-08-140 | 2005-0T-08-140 | 8mm x 140mm |
| 2005-08-160 | 2005-0T-08-160 | 8mm x 180mm |

Humerus Fixed Head



| Code | Size |
|---------------|-------|
| 2005-BH-33/0 | 33/0 |
| 2005-BH-33/-2 | 33/-2 |
| 2005-BH-33/+2 | 33/+2 |
| 2005-BH-35/0 | 35/0 |
| 2005-BH-35/-2 | 35/-2 |
| 2005-BH-35/+2 | 35/+2 |
| 2005-BH-37/0 | 37/0 |
| 2005-BH-37/-2 | 37/-2 |
| 2005-BH-37/+2 | 37/+2 |
| 2005-BH-39/0 | 39/0 |
| 2005-BH-39/-2 | 39/-2 |
| 2005-BH-39/+2 | 39/+2 |

Humerus Modular Head

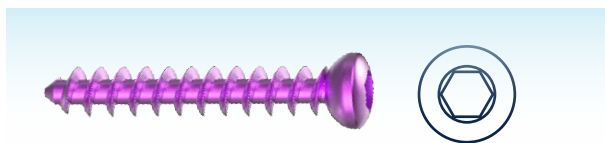


| Code | Size |
|---------------|-------|
| 2005-MH-33/0 | 33/0 |
| 2005-MH-33/-2 | 33/-2 |
| 2005-MH-33/+2 | 33/+2 |
| 2005-MH-35/0 | 35/0 |
| 2005-MH-35/-2 | 35/-2 |
| 2005-MH-35/+2 | 35/+2 |
| 2005-MH-37/0 | 37/0 |
| 2005-MH-37/-2 | 37/-2 |
| 2005-MH-37/+2 | 37/+2 |
| 2005-MH-39/0 | 39/0 |
| 2005-MH-39/-2 | 39/-2 |
| 2005-MH-39/+2 | 39/+2 |

xl-synergy Shoulder Replacement



Cortical Screw Ø3.5mm, Self Tapping



| Stainless Steel | Titanium | Length |
|-----------------|-----------|--------|
| 104-10 | Ti-104-10 | 10 |
| 104-12 | Ti-104-12 | 12 |
| 104-14 | Ti-104-14 | 14 |
| 104-16 | Ti-104-16 | 16 |
| 104-18 | Ti-104-18 | 18 |
| 104-20 | Ti-104-20 | 20 |
| 104-22 | Ti-104-22 | 22 |
| 104-24 | Ti-104-24 | 24 |
| 104-26 | Ti-104-26 | 26 |
| 104-28 | Ti-104-28 | 28 |
| 104-30 | Ti-104-30 | 30 |
| 104-32 | Ti-104-32 | 32 |
| 104-34 | Ti-104-34 | 34 |
| 104-36 | Ti-104-36 | 36 |
| 104-38 | Ti-104-38 | 38 |
| 104-40 | Ti-104-40 | 40 |
| 104-42 | Ti-104-42 | 42 |
| 104-44 | Ti-104-44 | 44 |
| 104-45 | Ti-104-45 | 45 |
| 104-46 | Ti-104-46 | 46 |
| 104-48 | Ti-104-48 | 48 |
| 104-50 | Ti-104-50 | 50 |
| 104-55 | Ti-104-55 | 55 |
| 104-60 | Ti-104-60 | 60 |
| 104-65 | Ti-104-65 | 65 |

pain was past

make pain free life your future



33 *Years of*
Dedication

ORTHO LIFE SYSTEMS PVT. LTD.

Corporate Office & Works: D-111, Okhla Industrial Area, Phase 1, New Delhi-110020, India

Sales Office: 49, Church Road, Bhogal, Jangpura, New Delhi-110014, India

Phone: +91-11-41324393, 42851229 | Toll Free: 1800 121 1190 | Email: info@xlo.in | Web: www.xlo.in

www.xlo.in